

# TIGRESS

## OUTRIGGERS & GEAR



Two Conchs Charters  
Capt. Jack Carlson • @twoconchs

2021 CATALOG

A Division of Eastern Metal Supply





Lemieux Charters -  
Capt Chris Lemieux - @captchrislemieux

# TIGRESS

OUTRIGGERS & GEAR

## MISSION

Since our inception, our mission has been to raise the bar for innovation, quality, ease of use, and convenience on the products we offer to the salt water sport fishing enthusiast.

All aluminum outriggers are constructed of cold drawn aluminum for maximum strength and durability. We then use a state of the art anodizing process to protect and color-enhance them. Every accessory is constructed of the highest quality materials to give the maximum service and life. Tigress uses only 300 series stainless or 316 Stainless Steel in every rod holder and outrigger holder.

We continue to expand our offerings of fine products and accessories making the Tigress product line of outriggers and gear the standard of quality and excellence.

## CONTENTS

NEW FOR 2021	2
DREDGE BOOM	6
MOUNTS	8
OUTRIGGERS	12
OUTRIGGER SYSTEMS	14
OUTRIGGING KITS & ACCESSORIES	16
ROD HOLDER	18
ROD HOLDER ACCESSORIES	22
KITE ROD HOLDERS & CLUSTERS	24
KITES	26
KITE ACCESSORIES	28
MARINE HARDWARE	30





NEW FOR 2021

XD FLAG POLES NEW

- Gimbal butt makes flying in any rod holder a breeze
- Made of anodized aluminum
- Easy to store
- Fits standard 1-5/8" rod holders

PART	DESCRIPTION
88410	<ul style="list-style-type: none"><li>• 42" ROD HOLDER FLAG POLE</li><li>• HOLDS TWO 12" SANDBAR FLAGS OR ONE 20"X24" DIVE FLAG</li></ul>
88411	<ul style="list-style-type: none"><li>• 54" ROD HOLDER FLAG POLE</li><li>• HOLDS 36" X 60" SANDBAR FLAG OR 20" X 24" DIVE FLAG</li></ul>



PORTABLE CLEATS NEW

- Constructed of anodized aluminum
- Perfect for holding a fender at the sandbar, using as an extra cleat, or using as a hose holder while washing your boat
- Easily stowable, portable, and great for travel
- Fits standard 1-5/8" rod holders
- 36' Portable Cleat is ideal for transom cross tie

PART	ANGLE	SIZE
88412	10°	15" TALL WITH 9" CLEAT
88413	10°	36" TALL WITH 9" CLEAT



SHORE POWER CORD HOLDER NEW

PART	88414
------	-------

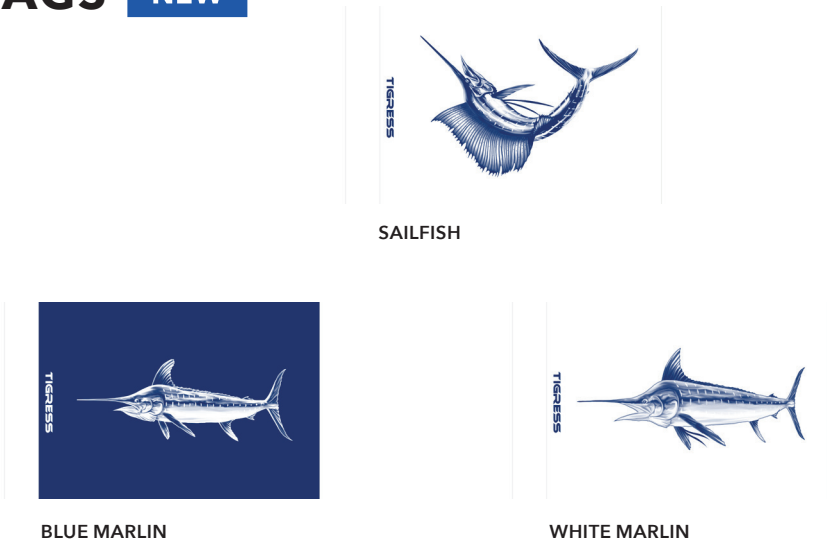
- 15° bent butt
- Perfect for holding your shore power cord or hose while cleaning boat.
- Easily stowable, portable, and great for travel
- Constructed of anodized aluminum
- Fits standard 1-5/8" rod holders



BILLFISH RELEASE FLAGS NEW

PART	LENGTH	COLOR
88420	12"X18"	SAILFISH
88421	12"X18"	WHITE MARLIN
88422	12"X18"	BLUE MARLIN

- Double Grommets
- UV Resistant
- Display you daily releases



65LB KITE LINE ASSEMBLY NEW

PART	88613-1
------	---------

- Ready Rigged Kite Line
- 250' of 65 lb Hi Vis Yellow 8 Strand Braid
- Three release clips
- Swivels on a reusable spool and mesh bag



ADJUSTABLE DEEP DROP LEAD HOLDER NEW

PART	88447
------	-------

COMING  
SPRING  
2021

- Fits into gunnel rod holder
- Adjustable angles, 0, 15 and 30 degree
- Protect your boat and rod holders from damage
- Perfect for Sword Fishing and Deep Dropping
- Portable and Storable
- Anodized Aluminum





NEW FOR 2021



PRO SERIES SINGLE RIGGING KIT NEW

PART  
88645-1

COMING  
SPRING  
2021

- Mesh Bag
- 50yd spool LP 400lb Blue Outrigger Mono
- 2 1 1/4" black stops, 2 release clips
- 2 Tigress Single Locking Halyards
- Crimps and Snap Lock Swivels



PRO SERIES DOUBLE RIGGING KIT NEW

PART  
88646-1

- Mesh Bag,
- 100yd spool LP 400lb Blue Outrigger Mono
- 4 1 1/4" black stops
- 4 release clips
- 2 Tigress Double Locking Halyards
- 2 SS Teaser Rings, Crimps, Snap Lock Swivels.



PRO SERIES TRIPLE RIGGING KIT NEW

PART  
88647-1

- Mesh Bag
- 100 yd spool LP 400lb Blue Outrigger Mono
- 6 1 1/4" black stops, 6 release clips
- 2 Tigress Triple Locking Halyards
- 2 SS Teaser Rings
- Crimps and Snap Lock Swivels



PRO SERIES CENTER RIGGING KIT NEW

PART  
88610-1

- Mesh Bag,
- 50yd spool LP 400LB Blue Outrigger Mono
- 1 1 1/4" black stop
- 1 release clip
- 1 Tigress Single Locking Halyard
- Crimps and Snap Lock Swivels



PRO SERIES TIGRESS LOCKING HALYARDS NEW

PART	DESCRIPTION
88645	SINGLE LOCKING HALYARD
88646	DOUBLE LOCKING HALYARD
88647	TRIPLE LOCKING HALYARD

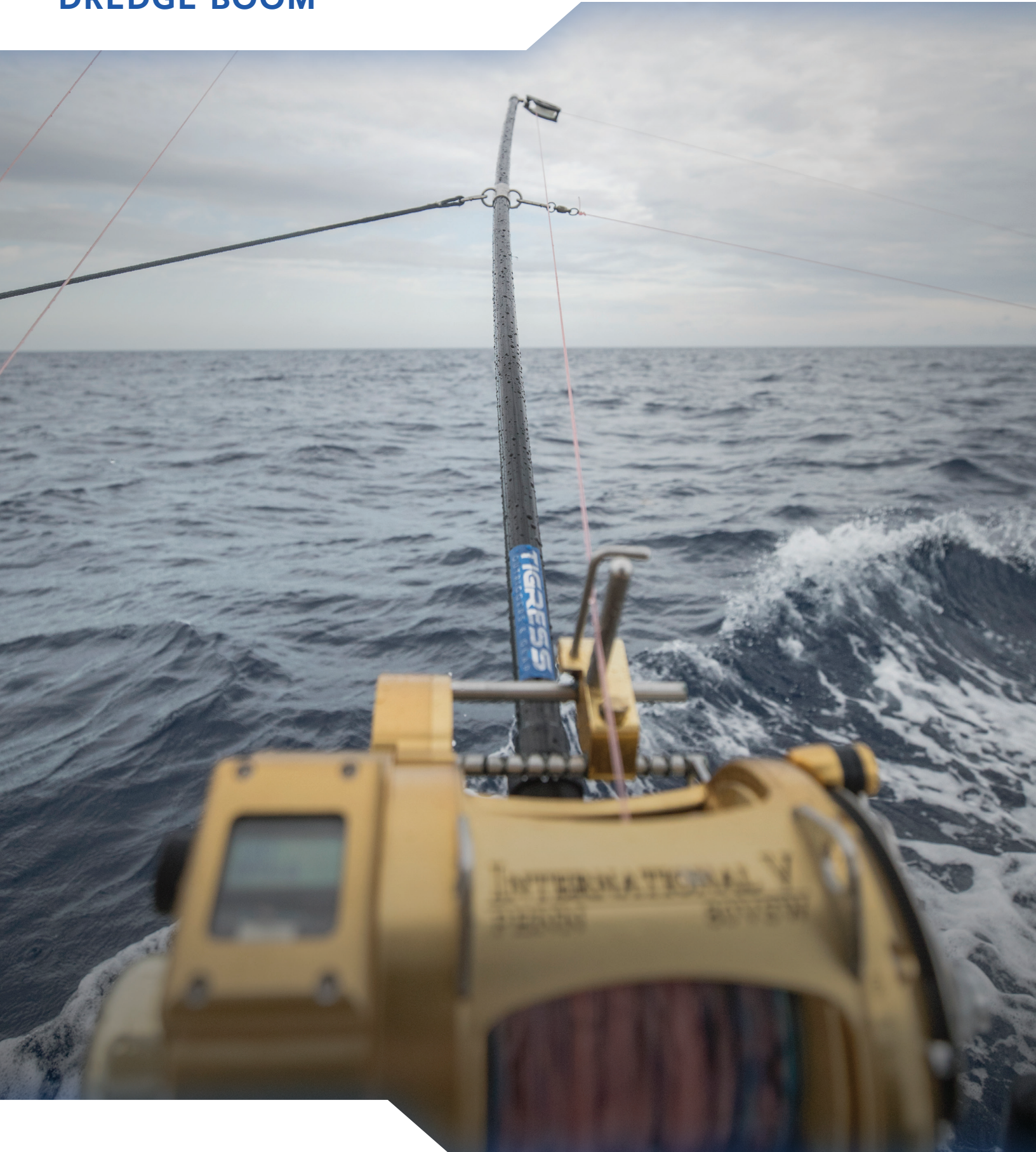
COMING  
SPRING  
2021

- Locks Outrigger Line in place with no slip or creep.
- 12" bungee with SS Snap Lock Swivel





DREDGE BOOM



XD POSEIDON DREDGE BOOM

PART	LENGTH	COLOR
88443	7'	BLACK/SILVER

- Allows smaller center consoles to fish like bigger boats
- Outpulls any other dredge on the market
- 7' black fiberglass boom
- 3/0 Folbe heavy-duty block pulley
- Ideal for LP or Hooker electric reels
- 316 stainless steel hardware
- Comes with 14' nylon safety tether with 316 stainless steel carabineer



XD POSEIDON DREDGE RIGGING KIT

PART	88443-1
------	---------

- 50 yards of 400lb Momoi Outrigger Mono
- 500 lb stainless dredge dog swivel
- 29 mm Harken Carbo Air Block
- 2" spring gate snap
- Sleeve crimps



DREDGE BOOM SAFETY TETHER

PART	88446
------	-------

- 14' nylon safety tether with 316 stainless steel carabineer
- For use with XD Poseidon Dredge Boom or big game trolling rods





MOUNTS



XD BAY SERIES TOP MOUNT NEW

PART	88870
------	-------

COMING  
SPRING  
2021

- For use on sport fishing boats up to 40 feet
- Accepts all Tigress XD 1-1/8" butt diameter Outriggers.
- 19 upper-arm angle/locking (@10 deg.) using Tigress XD 316L Stainless Steel tooth locking design with horizontal stops for Trailing and bridges.
- Large 3-lobe UV ergonomic knob for changing and locking the outriggers' elevation
- 24 adjustable/locking system positions (15 degree increments) featuring Tigress XD 316L Stainless Steel locking design with HD Spring return.
- User friendly Side Operating Lever.
- Large 'XD' Aluminum 14.5mm thick baseplate with four corner mounting.
- 5/16" through x 3.000" x 5.000" 4-bolt pattern
- Fits Tigress and other industry standard 4" x 6" mounting plates (four 5/16" diameter fasteners)
- Extreme-duty 316L Stainless Steel and anodized aluminum and fully sealed construction with UV protection
- Ambidextrous mounting option to accommodate the side that the tri-lobe knob is positioned on.
- 3-Year Limited Warranty



XD CRANK TOP MOUNT NEW

PART	88880
------	-------

COMING  
SPRING  
2021

- For use on sport fishing boats up to 50 feet
- Adjustable Upper Arm with 'Run' & 'Laydown' position Stops.
- User friendly Folding Crank Handle with Integrated Drive Brake.
- Upper-Arm adjusting Ball-bearing drive system, with Integrated Balance Spring assist.
- Extreme Duty Top Plate, Upper Arm and Housings for Outriggers up to 22ft in length.
- Stainless-Steel & Bronze bushed Head pivot for Maximum trolling strength & durability.
- Unique invertible Tigress handle design for use on both soft and hard tops over 2" thick
- Accepts all Tigress XD 1-1/2" butt diameter outriggers and XD 1-1/8" butts using adapter
- Fits Tigress and other industry standard 4" x 6" mounting plates (four 5/16" diameter fasteners)
- Extreme-duty 316L Stainless Steel and anodized aluminum and sealed construction with UV protection
- 24 adjustable/locking system positions featuring Tigress XD 316L Stainless Steel design
- Ergonomic 316 Stainless Steel mirror-polished lever design with inverting ability for extra hand clearance on the thickest tops.
- User friendly underside lever actuation, with 8 optional indexable set-up positions
- Fits through all standard 3" diameter mounting plates and hard top holes
- Sold as pair
- 3-Year Limited Warranty



XD TOP MOUNT

PART	88850
------	-------

- For use on sport fishing boats up to 40 feet
- Unique invertible Tigress handle design for use on both soft and hard tops over 2" thick
- Accepts all Tigress XD 1-1/2" butt diameter outriggers and XD 1-1/8" butts using adapter
- Fits Tigress and other industry standard 4" x 6" mounting plates (four 5/16" diameter fasteners)
- Extreme-duty 316 Stainless Steel and anodized aluminum and sealed construction with UV protection
- 24 adjustable/locking system positions (15° increments)featuring Tigress XD 316 Stainless Steel design
- 19 upper-arm angle/locking positions (10° increments) using
- 3-Year Limited Warranty
- Tigress XD 316 Stainless Steel detent design with ambidextrous horizontal stops
- Large 3-lobe UV ergonomic knob with integral detent feature when changing outrigger elevation
- Ergonomic 316 Stainless Steel mirror-polished lever design with inverting ability for extra hand clearance on the thickest tops.
- User friendly underside lever actuation, with 8 optional indexable set-up positions
- Standard ¼" diameter locking stainless steel push-in-pin for outriggers
- Fits through all standard 3" diameter mounting plates and hard top holes
- Sold as pair



XD CENTER RIGGER TOP MOUNT

PART	88860
------	-------

- For use on sport fishing boats up to 40 feet
- Accepts all Tigress XD 1-1/8" butt diameter center riggers
- 19 upper-arm angle/locking (@10 deg.) using Tigress XD 316 Stainless Steel tooth locking design with horizontal stops
- Large 'XD' Aluminum 12mm thick baseplate with four corner mounting
- Extreme-duty 316 Stainless Steel and anodized aluminum construction
- Ambidextrous mounting option to accommodate the side the tri-lobe knob is positioned on
- ¼" through x 4.050" x 2.625" 4-bolt pattern
- Standard ¼" diameter stainless steel locking push-in-pin for outriggers
- Large 3-lobe UV ergonomic knob for changing and locking the outriggers' elevation
- 3-Year Limited Warranty





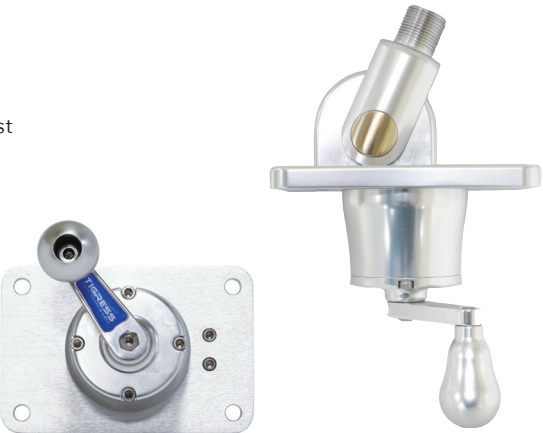
MOUNTS



MANUALLY ADJUSTABLE ANTENNA/RUNNING LIGHT MOUNT

PART	88810
------	-------

- Features a bottom mounted crank assembly for ease of deployment fore and aft
- Simply push up on the handle to release the gears and turn 12 times to complete deployment of your antenna/running light mount- then simply pull handle down to lock into place
- Adjustable up or down motion eliminates climbing the gunnel to adjust your antenna/running light mount
- Fits all prepared T-Tops with 3" mounting hole and fits Hard Tops up to 2-1/2" thick



CENTER RIGGER HOLDER

PART	88150
------	-------

- Clamp-on center rigger holder
- 1-5/16" IPS pipe clamp with 1-1/8" holder



OUTRIGGER HOLDERS AND REPLACEMENT TUBES

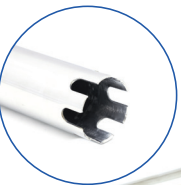
GUNNEL MOUNT	SIZE	MATERIAL
88500	1-1/8" ID	FABRICATED 304
88502	1-1/8" ID	CAST 316
88506	1-1/2" ID	CAST 316

SIDE MOUNT	SIZE	MATERIAL
88504	1-1/8" ID	FABRICATED 304
88505	1-1/8" ID	CAST 316
88508	1-1/2" ID	CAST 316

REPLACEMENT TUBE	SIZE	MATERIAL
88501	1-1/8" OD	CAST BASE
88503	1-1/8" OD	CUT BASE
88507	1-1/2" OD	CAST BASE



FABRICATED



CUT BASE TUBES



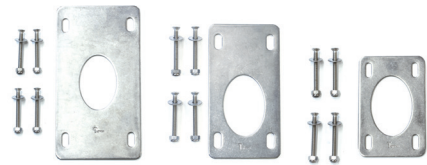
CAST 316 BASE TUBES

BACKING PLATES

PLEASE USE WITH PART # AS FOLLOWS:

GUNNEL MOUNT	SIDE MOUNT
88502-1 with 88502	88505-1 with 88505
88506-1 with 88506	88508-1 with 88508

- Gunnel mount and side mount backing plates
- Made of heavy gauge stainless steel
- Sized for cast outrigger holders only



T-TOP ALUMINUM WELD-ON EXTRUSIONS

PART	LENGTH	WIDTH	HEIGHT
88932	5'	6.5"	0.25"
OOMP-20	20'	5.516"	1.25"
OOMP-30	30'	5.516"	1.25"

- All backing & mounting plates are pre-drilled for installation
- All mounting holes are 3"



BACKING PLATE

TOP MOUNT WEDGES

PART	DEGREE
88934	7°
88936	9°
88938	11°

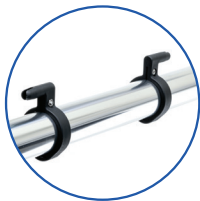
Angular adjusting wedges to straighten the top mount in installation allow for less stress on the top and smoother deployment of your outriggers.



OUTRIGGER LINE HOLDER

PART	88691
------	-------

- Fits both 1-1/8" and 1-1/2" Outrigger Poles
- Keeps outrigger lines organized while poles are collapsed
- Easy clamp on installation
- Sold as 2 Pairs



OUTRIGGER HOLDER REDUCERS

DOWNSIZE YOUR OUTRIGGER HOLDERS.

PART	OD	ID
88680	REDUCE FROM 1-1/2"	1-1/8"
88680-1	REDUCE FROM 1-7/8"	1-1/2"
88681	REDUCE FROM 1-5/8"	1-1/2"



OUTRIGGER ACCESSORIES

Stabilize your outriggers in resting position by simply inserting into your existing weld-on rod holder and clipping to your outrigger.

PART	DESCRIPTION
88677	OUTRIGGER STANDOFF

88677





OUTRIGGERS

XD TELESCOPING ALUMINUM OUTRIGGERS

- For use on sport fishing boats up to 40 ft.
  - Patented Tigress Track® Internal Tracking System, now with dual-tracks for increased tube strength and guiding alignment
  - Larger tube diameters and wall thicknesses for increased strength and durability
  - Anodized cold draw tubes inside and out for maximum protection from corrosion
  - Double-locking and polished 316 Stainless Steel push-buttons on the lower tube sections for less ‘hole wallowing’
- Includes a handy, heavy duty mesh storage bag
  - Redesigned rings and tips
  - 316 Stainless Steel polished eyelets
  - UVI marine grade thermoplastic internal bushings for trouble free sliding operation
  - Double ¼” cross-holes in the butt ends in much thicker wall in anodized aluminum for the push-in-pin
  - UVI thermoplastic butt sleeves to fit all
- 1-1/2" top and center rigger mounts
  - Retracts to under 6’ for trailering, bridges and storage
  - 3-Year Limited Warranty
  - Sold as pair

Patent #7,025,015 B2

PART	LENGTH	BASE OD	COLOR
88923	15'	1-1/8"	SILVER
88923-1	15'	1-1/8"	BLACK
88924	15'	1-1/2"	SILVER
88924-1	15'	1-1/2"	BLACK
88925	18'	1-1/2"	SILVER
88925-1	18'	1-1/2"	BLACK



XD 3K CARBON FIBER TELESCOPING OUTRIGGERS

- For use on sport fishing boats up to 40 feet
  - Patented Tigress Track® Internal Tracking System
  - 3K carbon fiber woven finish
  - Retracts to under 6’ for trailering, bridges and storage
- 316 Stainless Steel polished eyelets
  - Redesigned rings and tips
  - Lightest telescoping outrigger in the industry
  - UVI thermoplastic butt sleeves to fit all Tigress top mounts
- Includes a handy, heavy duty mesh storage bag
  - 1-Year Limited Warranty
  - Sold as pair

Patent #7,025,015 B2

PART	LENGTH	BASE OD	COLOR
88679	18'	1-1/2"	MATTE BLACK/BLACK
88679-1	18'	1-1/2"	MATTE BLACK/SILVER
88679-3	21'	1-1/2"	MATTE BLACK/BLACK
88679-4	21'	1-1/2"	MATTE BLACK/SILVER



XD 3K CARBON FIBER TELESCOPING CENTER OUTRIGGERS NEW

- For use on sport fishing boats up to 40 feet
  - Patented Tigress Track® Internal Tracking System
  - 3K carbon fiber woven finish
- Retracts to under 6’ for trailering, bridges and storage
  - 316 Stainless Steel polished eyelets
  - Redesigned rings and tips
- Lightest telescoping center rigger in the industry
  - UVI thermoplastic butt sleeves to fit all Tigress top mounts
  - Includes a handy, heavy duty mesh storage bag
  - 1-Year Limited Warranty

PART	LENGTH	BASE OD	COLOR
88679-2	8'	1-1/8"	MATTE BLACK/SILVER
88679-5	8'	1 1/8"	MATTE BLACK/BLACK



XD TELESCOPING ALUMINUM CENTER OUTRIGGERS NEW

- For use on sport fishing boats up to 40 ft.
  - 1-1/8” butt OD
  - Patented Tigress Track® Internal Tracking System, now with dual-tracks for increased tube strength and guiding alignment
  - Larger tube diameters and wall thicknesses for increased strength and durability
  - Anodized cold draw tubes inside and out for maximum protection from corrosion
- Redesigned rings and tips
  - Double-locking and polished 316 Stainless Steel push-buttons on the lower tube sections for less ‘hole wallowing’
  - 316 Stainless Steel polished eyelets with smooth through centers
  - UVI marine grade thermoplastic internal bushings for trouble free sliding operation
  - Double ¼” cross-holes in the butt ends in much thicker wall in anodized aluminum for the push-in-pin
- UVI thermoplastic butt sleeves to fit all top and center rigger mounts
  - Retracts to under 5’ 5” for trailering, bridges and storage
  - Includes a handy, heavy duty mesh storage bag
  - 3-Year Limited Warranty

Patent #7,025,015 B2

PART	LENGTH	BASE OD	COLOR
88921	8'	1-1/8"	SILVER
88921-1	8'	1-1/8"	BLACK
88922	12'	1-1/8"	SILVER
88922-1	12'	1-1/8"	BLACK



TELESCOPING FIBERGLASS OUTRIGGER

- An economical alternative to aluminum outriggers for 18’ to 28’ boats
  - 15’ telescoping, three-section, heavy duty fiberglass outriggers feature heavy line guides for easy rigging
- Includes a vinyl bag for storage
  - Retracts to less than 6’

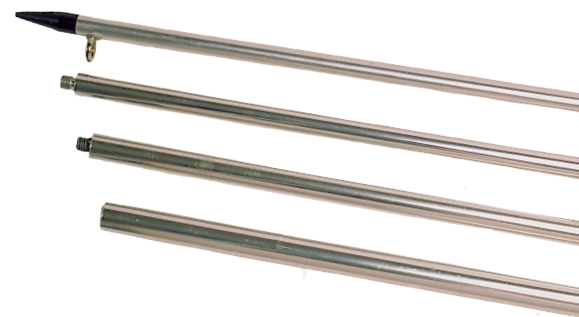
PART	LENGTH	BASE OD	COLOR
88200	15'	1-1/8"	WHITE/BLUE



FIXED ALUMINUM OUTRIGGER

- Constructed of heavy duty anodized aluminum with nylon guide assembly and stainless steel line guides
  - Four section, screw together assembly with black anodized aluminum tip

PART	LENGTH	BASE OD	COLOR
88220	15'	1-1/8"	SILVER/BLACK





SYSTEMS



Daymaker Charters -  
Capt Pat Price - @daymaker\_charters

XD CRANK TOP MOUNT SYSTEM NEW

- XD Crank Top Mount
- XD Tigress Track® Telescoping Outriggers
- Pro Series Double Rigging Kit

PART	MOUNT	OUTRIGGER	RIGGING KIT
88825-2	XD CRANK MOUNT	18' SILVER XD	PRO SERIES DOUBLE
88825-3	XD CRANK MOUNT	18' BLACK XD	PRO SERIES DOUBLE
88679-02	XD CRANK MOUNT	18' CARBON FIBER B/B XD	PRO SERIES DOUBLE
88679-03	XD CRANK MOUNT	18' CARBON FIBER B/S XD	PRO SERIES DOUBLE



XD TOP MOUNT SYSTEM

- XD Top Mount
- XD Tigress Track® telescoping outriggers
- Premium rigging kit
- Black mesh carry bag for storage

PART	MOUNT	OUTRIGGER	RIGGING KIT
88824	XD TOP MOUNT	15' SILVER XD	ELITE
88824-1	XD TOP MOUNT	15' BLACK XD	ELITE
88825	XD TOP MOUNT	18' SILVER XD	ULTIMATE
88825-1	XD TOP MOUNT	18' BLACK XD	ULTIMATE
88679-00	XD TOP MOUNT	18' CARBON FIBER B/B XD	ULTIMATE
88679-01	XD TOP MOUNT	18' CARBON FIBER B/S XD	ULTIMATE



XD BAY SERIES TOP MOUNT SYSTEM NEW

- XD Bay Series mount
- XD Tigress Track® telescoping center riggers
- Deluxe Rigging Kit

PART	MOUNT	OUTRIGGER	RIGGING KIT
88823-2	XD BAY	15' 1 1/8" SILVER	DELUXE
88823-3	XD BAY	15' 1 1/8" BLACK	DELUXE



XD CENTER RIGGER SYSTEM

- XD Center Rigger Mount
- XD Tigress Track® telescoping center riggers
- Center rigger rigging kit

PART	MOUNT	OUTRIGGER	RIGGING KIT
88621	XD CENTER	8' SILVER XD	CENTER
88621-1	XD CENTER	8' BLACK XD	CENTER
88622	XD CENTER	12' SILVER XD	CENTER
88622-1	XD CENTER	12' BLACK XD	CENTER



ROD HOLDER/OUTRIGGER TELESCOPING SYSTEM  
ECONOMY VERSION OF A TELESCOPING OUTRIGGER SYSTEM

- Economy rigging kit
- 1-1/8" fabricated flush mount outrigger holders
- 1-1/8" fiberglass poles

PART	LENGTH	COLOR	MOUNT
88200-1	15'	WHITE/BLUE	88500





RIGGING KITS

All kits feature top quality materials and are ready to be installed. Each kit includes clips, mounting hardware, cord, snubbers, glass rings or snaps and pulleys.

ECONOMY

AFFORDABLE KIT DESIGNED FOR SMALL BOAT RIGGERS UP TO 15'

- Pair of high impact release clips
- Pair of 1-1/4" cork stops
- Pair of glass ring snubbers
- Pair of eye straps with screws



PART	DESCRIPTION
88600	100' OF WHITE NYLON BRAID

ELITE

TOP QUALITY KIT

- Pair of EZ release clips
- Pair of 1-3/4" cork stops
- Pair of single swivel snubbers
- Pair of eye straps with screws
- 4 leader snaps



PART	DESCRIPTION
88603	100' OF BLACK NYLON BRAID
88603-1	100' OF 400 LB. BLACK MONO & 4 CRIMPS

CENTER RIGGER KIT

PART	88610
------	-------

- High impact release clip
- 1-1/4" cork stop
- Glass ring snubber
- Eye strap with screws
- 2 leader snaps
- 30' of black nylon braid



DELUXE

TOP QUALITY KIT

- Pair of high impact release clips
- Pair of 1-1/4" cork stops
- Pair of glass ring snubbers
- Pair of eye straps with screws
- 4 leader snaps



PART	DESCRIPTION
88601	100' OF BLACK NYLON BRAID
88602	100' OF 400 LB. BLACK MONO & 4 CRIMPS

ULTIMATE

FOR DOUBLE RIGGING YOUR OUTRIGGERS FOR RIGGERS UP TO 22'

- 2 pairs of EZ release clips
- 2 pairs of 1-3/4" cork stops
- Pair of double swivel snubbers
- Pair of eye straps with screws
- 8 leader snaps



PART	DESCRIPTION
88605	200' OF BLACK NYLON BRAID
88605-1	200' OF 400 LB. BLACK MONO & 12 CRIMPS

COMPLETE TAG LINE KIT

- Hi-polished 316 Stainless Steel tag line weight with 1/4" rubber bumper to protect your boat
- 35' of 400 lb. black mono
- Cork stops
- 316 Stainless Steel snaps
- (2) #64 rubber bands



PART	DESCRIPTION
88642	TAG LINE WEIGHT
88644	TAG LINE KIT

OUTRIGGING ACCESSORIES

SNUBBERS

TYPE	PART	DESCRIPTION
A	88620	12" ECONOMY SNUBBER
B	88624	16" DELUXE SNUBBER
D	88628	16" DELUXE PRO SNUBBER
E	88632	16" ELITE SNUBBER
F	88634	16" ELITE PRO SNUBBER W/STAINLESS SNAP
G	88635	6" ELITE SNUBBER W/BALL BEARING COASTLOCK SWIVEL
G	88635-1	12" ELITE SNUBBER W/BALL BEARING COASTLOCK SWIVEL
G	88635-2	18" ELITE SNUBBER W/BALL BEARING COASTLOCK SWIVEL
H	88636	12" ELITE SNUBBER W/PLASTIC SNAP
I	88639	18" TRIPLE SNUBBER W/STAINLESS SNAP



ACCESSORIES

TYPE	PART	DESCRIPTION
A	88630	SINGLE STAINLESS SWIVEL
B	88640	DOUBLE STAINLESS SWIVEL
D	88650	PAIR OF GLASS OUTRIGGER RINGS
E	88652	PAIR OF 1-1/4" CORK STOPS
F	88654	PAIR OF 1-3/4" CORK STOPS
G	88656	PAIR OF OUTRIGGER RELEASE CLIPS
H	88657	DOWN RIGGER RELEASE CLIP
I	88659	FLAT LINE RELEASE CLIP
J	88660	PAIR OF STAINLESS STEEL RINGS
K	88664	PAIR OF 316 STAINLESS SNAPS
L	88666	PAIR OF NICKEL PLATED SNAPS
M	88667	PAIR OF STAINLESS PAD EYES W/STAINLESS SCREWS
N	88668	ANTENNA FLAG CLIP
O	88669	HALYARD FLAG CLIP
P	88670	100' OF 400 LB. TEST BLACK MONO (DIA. 2.2 MM)
Q	88671	100' OF 300 LB. BLACK NYLON BRAID
Q	88672	100' OF 375 LB. WHITE NYLON BRAID
R	88678	PLANER RELEASE ASSEMBLY
S	88690	PAIR OF 1-1/4" BLACK PLASTIC STOPS
T	88695	EZ OUTRIGGER RELEASE CLIPS (BLACK)
U	88697	PORTABLE RELEASE CLIP
V	88642	TAG LINE WEIGHT





ROD HOLDERS



The Skinny Fishing Team -  
Capt Bjorn Gunnlaugsson - @theskinny\_fishingteam

OVAL HEAD GUNNEL ROD HOLDERS

MEDIUM AND LARGE OVAL GUNNEL ROD HOLDERS

PART	LENGTH	ANGLE	ID
88525	9"	30° HEAD	1-5/8"
88527	9"	0° HEAD	1-5/8"
88529	9"	15° HEAD	1-5/8"
BACKING PLATE: 88525-1			

3.28" x 4.06"  
HEAD SIZE



OVAL HEAD



CAST BAR



PART	LENGTH	ANGLE	ID
88530	10-1/2"	30° HEAD	1-7/8"
88532	10-1/2"	0° HEAD	1-7/8"
88534	10-1/2"	15° HEAD	1-7/8"
BACKING PLATE: 88530-1			

3.85" x 4.88"  
HEAD SIZE

SWIVEL ROD HOLDERS

MEDIUM AND LARGE OVAL GUNNEL ROD HOLDERS

PART	LENGTH	ANGLE	ID
88520	10-1/2"	30° HEAD	1-7/8"
88522	10-1/2"	0° HEAD	1-7/8"
88524	10-1/2"	15° HEAD	1-7/8"
BACKING PLATE: 88530-1			

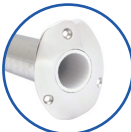
3.85" x 4.88"  
3 HOLE OVAL HEAD



RECTANGULAR  
HEAD



OVAL HEAD



SWIVEL BASE



PART	LENGTH	ANGLE	ID
88520XL	12-1/2"	30° HEAD	1-7/8"
88522SM	10-1/2"	0° HEAD	1-7/8"
88522XL	12-1/2"	0° HEAD	1-7/8"
88524XL	12-1/2"	15° HEAD	1-7/8"
88524SM	10-1/2"	15° HEAD	1-7/8"
BACKING PLATE: 88530-3			

4.25" x 4.75"  
4 HOLE EXTRA LONG SWIVEL  
RECTANGULAR HEAD

ROUND HEAD CLOSED BASE

HEAVY DUTY WITH DRAIN HOLE TO ACCEPT 1/4" NPT PIPE TO HOSE FITTING

PART	LENGTH	ANGLE	ID
77900	9"	30° HEAD	1-5/8"
77901	9"	15° HEAD	1-5/8"
77902	9"	0° HEAD	1-5/8"
BACKING PLATE: 77900-2 or 88525-1			

3.85"  
HEAD SIZE



ROUND HEAD



CLOSED BASE



BLIND MOUNT ROUND HEAD CLOSED BASE

- Eliminate fastening from the top of flange and enhance the look of your gunnel
- With drain hole to accept 1/4" NPT pipe to hose fitting

PATENT #8,291,636

PART	LENGTH	ANGLE	ID
77900-1	9"	30° HEAD	1-5/8"
77901-1	9"	15° HEAD	1-5/8"
77902-1	9"	0° HEAD	1-5/8"
BACKING PLATE: 77900-2 or 88525-1			

3.84"  
HEAD SIZE



ROUND HEAD



CLOSED BASE



BLIND MOUNT ROUND HEAD SWIVEL BASE

- Eliminate fastening from the top of flange and enhance the look of your gunnel
- Swivel base is designed to be used primarily with bent butt tackle

PATENT PENDING

PART	LENGTH	ANGLE	ID
77903	9"	30° HEAD	1-5/8"
77904	9"	15° HEAD	1-5/8"
77905	9"	0° HEAD	1-5/8"
BACKING PLATE: 77900-2 or 88525-1			

3.84"  
HEAD SIZE



ROUND HEAD



SWIVEL BASE



OVAL HEAD CLOSED BASE

Heavy duty oval head closed end base, with drain hole to accept 1/4" NPT pipe to hose fitting.

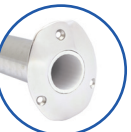
PATENT # 8,291,636

PART	LENGTH	ANGLE	ID
88535	9"	30° HEAD	1-5/8"
88537	9"	0° HEAD	1-5/8"
88539	9"	15° HEAD	1-5/8"
BACKING PLATE: 88525-1			

3.28"  
HEAD SIZE



OVAL HEAD



CLOSED BASE

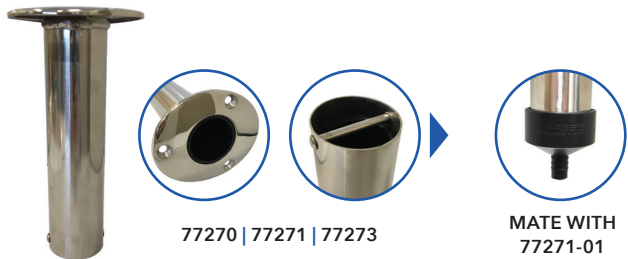




ECONOMY ROD HOLDERS

PART	ANGLE	SIZE	DESCRIPTION
77270	0°	9" x 1-5/8" ID	ECONOMY ROD HOLDER 0°
77271	15°	9" x 1-5/8" ID	ECONOMY ROD HOLDER 15°
77273	30°	9" x 1-5/8" ID	ECONOMY ROD HOLDER 30°

NEW



77270 | 77271 | 77273

MATE WITH  
77271-01

ROD HOLDER  
DRAINAGE CAP

NEW

PART

77271-01

- Covers rod holder base, allowing drainage tubes to be connected
- Mates with 77270, 77271, 77273
- Locks in place with twist

316 STAINLESS STEEL  
FLARED ROD HOLDER

PART

88155

- 10" weld on
- 316 Stainless Steel tapered without blade
- Heavy duty
- Rod holder ID 1-5/8"
- With vinyl liner

ROD  
RIGGER

Allows for your rods to give you a better fishing spread.

PART

77173

316 STAINLESS STEEL  
ADJUSTABLE CLAMP-ON

- Choose the angle you need while providing the versatility of mounting either horizontally or vertically
- Clamp-on rod holders are sized IPS pipe
- Includes a heavy white vinyl liner

PART	SIZE	ID
88191	1"	1-5/8"
88192	1-1/4"	1-5/8"
88193	1-1/2"	1-5/8"



CLAMP-ON ROD HOLDER

3/4" - 1" ADJUSTABLE

PART

88176

- Improved version of the old standard rail mount rod holder
- 316 Stainless Steel clamp mechanism with high polished stainless tube
- White vinyl liner for rod protection
- Fits 3/4" and 1" rails
- 9" x 2" OD base
- Rod holder ID 1-5/8"



SIDE MOUNT

316 STAINLESS STEEL 9" SIDE MOUNT

PART

88540

- Designed for applications where clamp-on or flush mount holders are not practical
- Can be mounted on any vertical flat surface
- White vinyl insert included to protect your rod

CAST BAR



SWIVEL SIDE MOUNT

316 STAINLESS STEEL 9" SWIVEL SIDE MOUNT

PART

88542

- Designed for applications where clamp-on or flush mount holders are not practical
- Can be mounted on any vertical flat surface
- White vinyl insert included to protect your rod

SWIVEL  
BASE



WELD ON ROD HOLDERS

PART	DESCRIPTION
66412	10" WELD ON ALUMINUM FLARED ROD HOLDER W/OUT BLADE
66242	10" WELD ON ALUMINUM FLARED ROD HOLDER W/BLADE
66122	10" WELD ON ALUMINUM ROD HOLDER W/LONG WEDGE
66262	10" WELD ON ALUMINUM ROD HOLDER W/STRAIGHT BLADE
88147	8.5" WELD ON ALUMINUM SPINNING ROD HOLDER

66412



88147



66262



66122



66242



STRAIGHT ROD HOLDER

8-1/2" STRAIGHT INSIDE CONSOLE KITE ROD HOLDER

PART

66401

4 hole 3"x 4-1/2" brushed pad.

STRAIGHT SIDE MOUNT

8-1/2" STRAIGHT SIDE MOUNT TRANSOM ROD OR CONSOLE ROD HOLDER

PART

66400

4 hole 3"x 4-1/2" brushed pad.

CONSOLE DOUBLE  
SPINNING ROD HOLDER

NEW

PART

88144-2

- Polished aluminum
- Internal threaded 1/4-20



BOLT-ON TRANSOM  
MOUNT ROD HOLDER

NEW

PART

88146

- Polished aluminum
- 4 hole 3" x 4 1/2" brushed pad
- 10" flared rod holder



TRANSOM MOUNT ROD HOLDERS

- Constructed of cold drawn anodized aluminum
- Includes white liners to protect your rod
- Available with either 4 or 5 rod holders

PART	LENGTH	DESCRIPTION
88144	35"	FIVE ROD HOLDER
88144-1	28"	FOUR ROD HOLDER

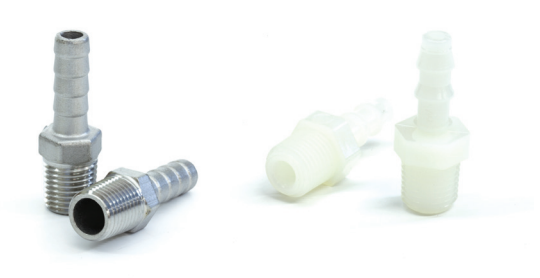




ROD HOLDER ACCESSORIES



PIPE TO HOSE FITTINGS



PART	DESCRIPTION
77910	316 STAINLESS STEEL 1/4" IPS
77911	NYLON 1/4" IPS

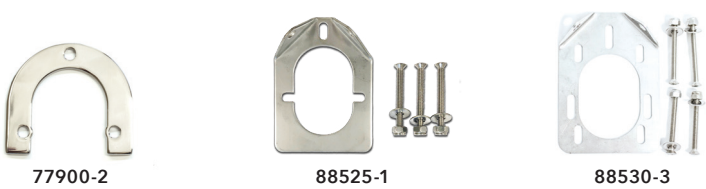
LARGE ROD HOLDER EXTENDERS

- Stainless and nylon rod holder extenders to shorten your rod holder to fit your bent butt fishing rod
- We also offer our stainless steel swivel adapter to convert your standard rod holder to a swivel rod holder
- Fits most medium and large rod holders and are 1.51" wide
- Available in 2", 4" & 6"



PART	LENGTH	MATERIAL
88686	6"	STAINLESS STEEL
88686-1	4"	STAINLESS STEEL
88686-2	2"	STAINLESS STEEL
88688	6"	NYLON
88688-1	4"	NYLON
88688-2	2"	NYLON

BACKING PLATES



PART	DESCRIPTION
77900-2	ROUND HEAD BACKING PLATE
88525-1	MEDIUM BACKING PLATE
88530-3	UNIVERSAL BACKING PLATE

SWIVEL ADAPTER

2-1/2" L x 1-1/2" W - STAINLESS STEEL  
SWIVEL ROD HOLDER ADAPTER

PART	88687
------	-------



2-1/2" L x 1-1/2" W

TIGERFISH BAT

18" ALL ALUMINUM CONSTRUCTION  
WITH SOFT EVA FOAM GRIP

PART	88682
------	-------



T-TOP ROD SAFETY STRAPS

PART	DESCRIPTION
88676	PAIR
88676-1	2 PAIRS



10' SAFETY STRAP

PART	88675	PAIR
------	-------	------



VINYL LINERS FOR ALUMINUM WELD-ON ROD HOLDERS

PART	DESCRIPTION	COLOR
88152-3	FOR 8-1/2" FLARED ROD HOLDERS	WHITE
88152-4	FOR 8-1/2" FLARED ROD HOLDERS	BLACK
88152-5	FOR 10" FLARED ROD HOLDERS	WHITE
88152-6	FOR 10" FLARED ROD HOLDERS	BLACK
LINERSRH3	FOR SRH-3 UV PROTECTED PVC	WHITE
LINERSRH4	FOR SRH-3 UV PROTECTED PVC	BLACK



VINYL LINERS FOR GUNNEL ROD HOLDERS

PART	ANGLE	COLOR	LENGTH
77900-3	30°	BLACK	9"
77901-3	0°	BLACK	9"
77902-3	15°	BLACK	9"
77900-4	30°	WHITE	9"
77901-4	0°	WHITE	9"
77902-4	15°	WHITE	9"
88530-00	0°	BLACK	10-1/2"
88530-15	15°	BLACK	10-1/2"
88530-30	30°	BLACK	10-1/2"
88530-2	0°	WHITE	10-1/2"



ALL 10-1/2" VINYL INSERTS ARE FOR 88520 AND 88530 SERIES ROD HOLDERS

CUP HOLDERS

LARGE  
STAINLESS STEEL  
CUP INSERT

NEW

Fits 30 oz and  
20 oz Tumblers.

MATES WITH 88586-1

PART	HOSE SIZE	HOLE SIZE
88586	3/8"	4 1/8"



LARGE  
CUP HOLDER  
MOUNTING RING

PART	88586-1
------	---------



BLACK PLASTIC  
CUP INSERT

PART	PCHE-BP
------	---------

w/Stainless Steel rim.  
MATES WITH PCHE

STAINLESS STEEL  
CUP INSERT

PART	88585
------	-------

MATES WITH PCHE



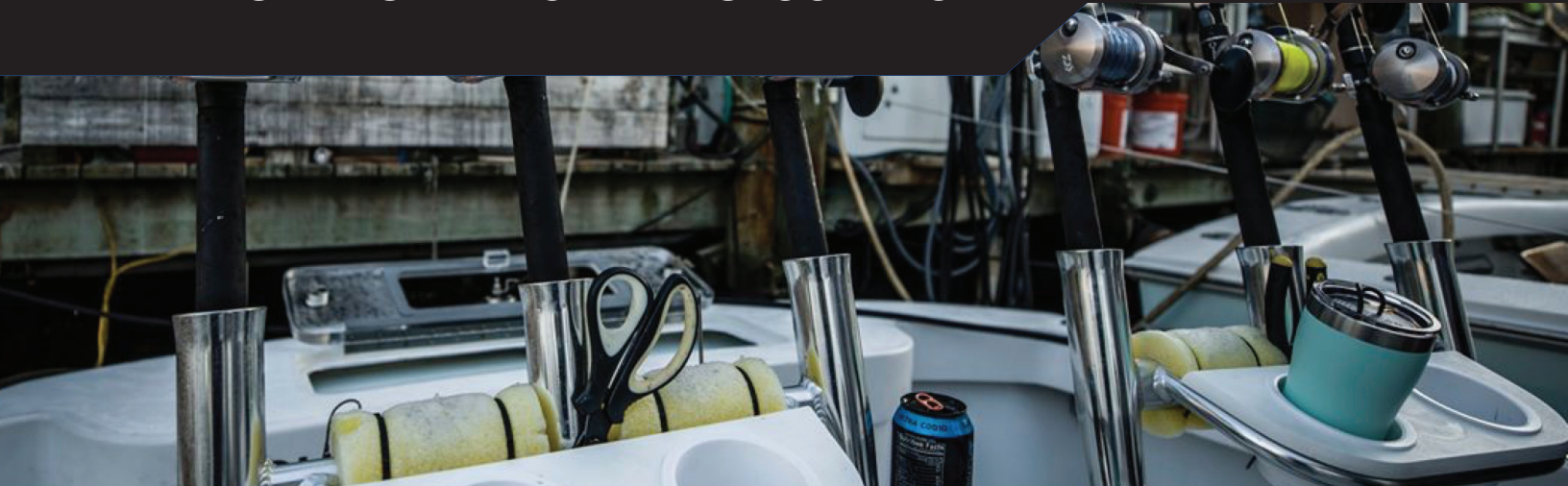
CUP HOLDER  
MOUNTING RING

PART	PCHE
------	------





KITE ROD HOLDERS AND CLUSTERS



GS FIVE ROD CLUSTER **NEW**

PART	88157-2
------	---------

- Smaller, more compact than our original Five Banger
- Designed to increase your rod storage capacity
- Constructed of cold drawn high polished anodized aluminum



GS TRIDENT **NEW**

- Smaller, more compact than our original Triple Kite Rods
- Used for one kite rod and two additional rods to increase your rod storage capacity and keep them up and out of the way
- Constructed of cold drawn anodized aluminum
- Available in either bent butt or straight



PART	DESCRIPTION
88160	TRIDENT ROD HOLDER - BENT BUTT
88160-1	TRIDENT ROD HOLDER - STRAIGHT BUTT

FIVE BANGER

- Designed to increase your rod storage capacity from 1 to 5 and keep your fishing rods in easy reach
- Constructed of cold drawn high polished anodized aluminum
- Tube ID 1-5/8" Base OD 1-1/2"



PART	DESCRIPTION
88157	FIVE ROD CLUSTER - STRAIGHT BUTT
88157-1	FIVE ROD CLUSTER - BENT BUTT

TRIPLE KITE ROD

- Rod holder is used for 1 kite rod and 2 additional rods to increase your rod storage capacity and keep them up and out of the way
- Constructed of cold drawn high polished anodized aluminum
- Tube ID 1-5/8" Base OD 1-1/2"



PART	DESCRIPTION
88156	TRIPLE KITE ROD HOLDER - BENT BUTT BRUSHED
88158	TRIPLE KITE ROD HOLDER - BENT BUTT POLISHED
88159	TRIPLE KITE ROD HOLDER - STRAIGHT BUTT POLISHED

GS OFFSET TRIPLE WITH CUP HOLDERS **NEW**

- This quality rod holder can be used for rod storage and is most useful in kite fishing
- Cup holders allow for holding rigging tools as well as a drink
- Constructed of anodized aluminum and white liner to protect rods



PART	DESCRIPTION
88148	OFFSET TRIPLE WITH CUP HOLDER - PORT SIDE (AS SHOWN)
88148-1	OFFSET TRIPLE WITH CUP HOLDER - STARBOARD SIDE

OFFSET TRIPLE KITE ROD

PART	88149-1
------	---------

- Triple offset can be used port or starboard
- Additional rod storage or for kite fishing
- Constructed of anodized aluminum
- Tube ID 1-7/8" Base OD 1-1/2"



DUAL KITE ROD

PART	88154
------	-------

- Designed to increase your rod storage capacity, or use one side for your kite rod and the other for your fishing rod
- Constructed of cold drawn high polished anodized aluminum
- Tube ID 1-5/8" Base OD 1-1/2"







Imagos Sport Fishing -  
Capt Christian Sanchez - @captchristians

SPECIALTY LITE WIND KITE

PART	88607-2
------	---------

- Will exceed all of your expectations and fly steady in 5-10 mph winds with a simple adjustment to the bridle, eliminating the need to use different kites for different winds
- Lightweight spars are constructed of 100% carbon graphite
- Includes extra 5th spar



ALL PURPOSE KITE

PART	88608-1
------	---------

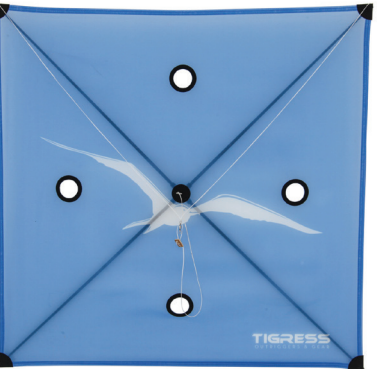
- Sturdy and dependable, will fly steady in 10-15 mph winds with a simple adjustment to the bridle, eliminating the need to use different kites for different winds
- Lightweight spars are constructed of 100% carbon graphite
- Includes extra 5th spar



HI-VELOCITY KITE

PART	88611-4
------	---------

- Flies steady in winds of 15 mph and up
- 4 holes in the custom fabric body for passage of air through the face of the kite, allowing it to fly at higher velocity winds
- Lightweight spars are constructed of 100% carbon graphite
- Includes extra 5th spar



KITE STORAGE BAG

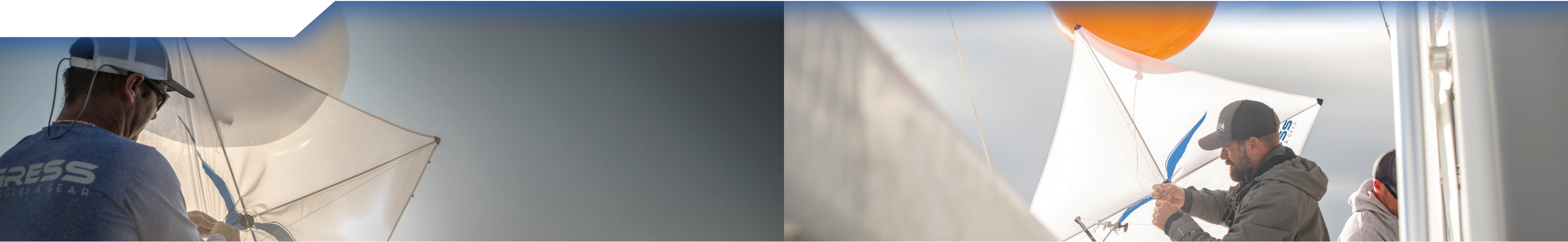
PART	88617-5
------	---------

- Keeps your kites dry and in excellent condition
- Lightweight and waterproof
- Easy access to your assembled kites
- 4 Velcro straps on back to easily secure to your boat





KITE ACCESSORIES



100LB BRAID KITE  
LINE ASSEMBLY

READY RIGGED KITE LINES

PART	88612
------	-------

- 250' of 100 lb. Hi Vis Orange 8 strand braid
- Three release clips
- Swivels on reusable spool



80LB BRAID KITE  
LINE ASSEMBLY

READY RIGGED KITE LINES

PART	88613
------	-------

- 250' of 80 lb. Hi Vis Green 8 strand braid
- Three release clips
- Swivels on reusable spool



50LB BRAID KITE  
LINE ASSEMBLY

READY RIGGED KITE LINES

PART	88614
------	-------

- 250' of 50 lb. Hi Vis Yellow 8 strand braid
- Two release clips
- Swivels on reusable spool



KITE CLIPS

PART	DESCRIPTION
88655	KITE KIT (2 CLIPS, 2 WIND-ON SWIVELS, & 1 COASTLOCK SWIVEL)
88655-1	KITE KIT (3 CLIPS, 3 WIND-ON SWIVELS, & 1 COASTLOCK SWIVEL)
88658	KITE RELEASE CLIP
88658-6	KITE RELEASE CLIP (NO WIRE) SMALL HOLE
88658-7	KITE RELEASE CLIP (NO WIRE) MEDIUM HOLE
88658-8	KITE RELEASE CLIP (NO WIRE) LARGE HOLE
88658-9	KITE RELEASE CLIP



88658



88658-6



88658-7



88658-8



88658-9



KITE ASSEMBLY BOX

EVERYTHING YOU NEED FOR A COMPLETE 2 KITE SETUP

PART	88619
------	-------

- 1 water resistant kite box
- 20 rigging bands
- 10 beads
- 10-1/4 oz lead
- 10 split shots
- 2 rigging needles
- 3 Non-Weighted Small Kite Line Markers
- 3 Weighted Medium Kite Line Markers
- 2 each, small, medium and large hole kite clip
- 2 Tigress helium balloons
- 2 kite strings
- 10 small, 10 medium, 10 large & 10 snap swivels
- 8 kite rings



KITE BRAID

2000 YARDS EACH

- Perfect for spooling kite or deep drop reels
- Super strong 8 strand braid
- Abrasion resistance and low water absorption

PART	WEIGHT	COLOR
80000	50LB	HI VIS YELLOW
80001	80LB	HI VIS GREEN
80002	100LB	HI VIS ORANGE
80003	65LB	HI VIS YELLOW



CERAMIC  
KITE RINGS

8 COUNT



PART	SIZE
88661	5/16"
88662	1/2"

KITE LINE  
MARKER TAPE

PART	88616
------	-------

- UV Resistant
- Made in USA



KITE BALLOONS

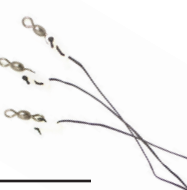
- Two balloons & three clips
- 100% pure latex
- Biodegradable



PART	COLOR
88615	YELLOW
88615-1	WHITE

KITE STRINGS

PART	DESCRIPTION
88617	3 LEG KITE STRING
88618	4 LEG KITE STRING



KITE LINE MARKERS

PART	DESCRIPTION
88962	NON-WEIGHTED SMALL KITE LINE MARKERS
88963	WEIGHTED MEDIUM KITE LINE MARKERS
88964	WEIGHTED LARGE KITE LINE MARKERS



KITE RING  
ASSEMBLY

PART	88665
------	-------





MARINE HARDWARE

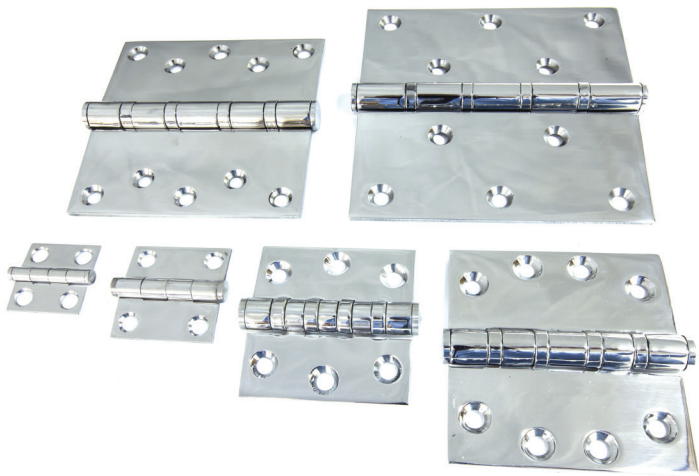


Chips Ahoy Charters -  
Capt Chip Sheehan - @chipsahoycharters

TIGRESS® HEAVY DUTY BEARING STYLE HINGES  
300 SERIES HI-POLISHED

- Hinge sizes 1-1/2" and 2" are standard with no ball bearings
- Hinge sizes 3", 4", 5", and 6" have unique ball bearing pin assembly for easy opening and closing
- Great for cockpit doors

PART	SIZE
21178	1-1/2" x 1-1/2"
21180	2" x 2"
21184	3" x 3"
21188	4" x 4"
21192	5" x 5"
21196	6" x 6"



316 STAINLESS STEEL GIMBALS

MAXIMUM STRENGTH AND BUILT TO WITHSTAND  
THE RIGORS OF OFFSHORE FISHING

PART	DESCRIPTION
88550	FLAT CHAIR GIMBAL (FOUR-WAY SWIVEL FOR MOUNTING UNDER BASE OF CHAIRS) 3-1/8" H X 4-1/8" W
88552	TUBULAR CHAIR GIMBAL (FOUR-WAY SWIVEL TUBULAR MOUNT FITS 1" CHAIR TUBING)
105550	FIGHTING CHAIR GIMBAL



GRIP RAILS

POLISHED & ANODIZED ALUMINUM

PART	LENGTH
GR-12	12"
GR-14	14"
GR-18	18"
GR-24	24"
GR-36	36"



FIBERGLASS ELECTRONICS  
STORAGE BOXES

- Stainless Lock
- 1/2" thick - door & frame
- 1 Gas Shock

PART	SIZE	DESCRIPTION
88651	24" W x 15" D x 10" H	SMALL, BLACK FACE
88653	30" W x 17" D x 11" H	LARGE, BLACK FACE





PREMIUM REEL HANGERS

- Gold anodized spring loaded bracket holds reel in harness lugs
- Rod tip end rotates to lock in the rod and store it up and out of the way
- Available for most Penn and Shimano reels



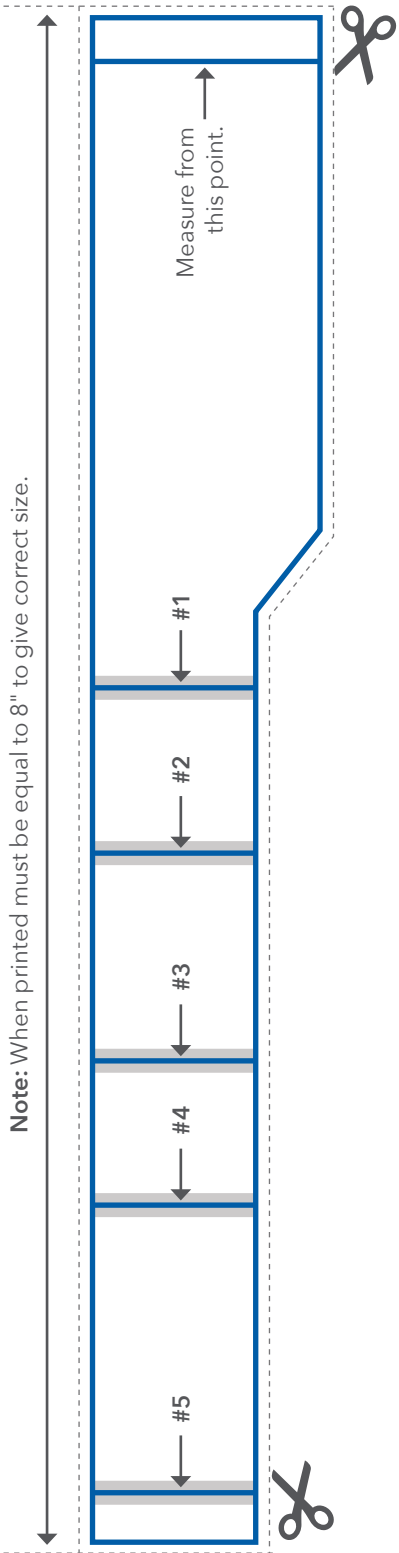
PART	DESCRIPTION
88703	30TW, 30SW, 30STW PENN, TLD 50 SHIMANO, VSW30 (2.823)
88710	30W TIAGRA (2.970)
88711	50 TIAGRA (2.891)
88712	50WLRS TIAGRA, 50W, 130H/S PENN, TBM 80/130 SHIMANO (3.678)
88713	80W TIAGRA (4.387)
88714	130 TIAGRA (4.308)
88715	TLD 25/30 II SHIMANO (2.213)
88725	ADJUSTABLE REEL HANGER (ONE SIZE FITS MOST REELS)

PREMIUM ROD HANGERS

- To accommodate hanging your rods up and out of the way with the rod butt and tip
- Rod hangers available in anodized aluminum, silver, gold, black and polished stainless steel
- Dimensions: Closed End = 1.55" & Open End = .60"



PART	COLOR
88544	SILVER ANODIZED
88545	GOLD ANODIZED
88546	BLACK ANODIZED
88547	POLISHED 316 STAINLESS STEEL



	ACTUAL PIPE DIAMETER	FRACTIONAL PIPE O.D. (APPROXIMATE)	PIPE CIRCUMFERENCE
1	1.050	1-1/16"	3-5/16"
2	1.315	1-5/16"	4-1/8"
3	1.660'	1-21/32"	5-7/32"
4	1.900	1-7/8"	5-31/32"
5	2.375	2-3/8"	7-15/32"

CUT OUT CIRCUMFERENCE MEASURING TAPE, ALONG DOTTED LINE, AND WRAP AROUND PIPE TO DETERMINE YOUR PIPE SIZE.



# TIGRESS

OUTRIGGERS & GEAR

2230 4th Avenue North | Lake Worth, FL 33461  
tigress@easternmetal.com | 844-740-1260

TIGRESSOUTRIGGERS.COM



A Division of Eastern Metal Supply

