

A DIVISION OF EASTERN METAL SUPPLY

# TIGRESS

OUTRIGGERS & GEAR

---

PRODUCT GUIDE

2025



COMBINATION ROD & CUP HOLDERS  
NOW AVAILABLE!





A DIVISION OF EASTERN METAL SUPPLY

# TIGRESS

OUTRIGGERS & GEAR

2025 **PRODUCT  
GUIDE**



**SINCE OUR INCEPTION**

Our mission has been to raise the bar for innovation, quality, ease of use, and convenience on the products we offer to the salt water sport fishing enthusiast.

All aluminum outriggers are constructed of cold drawn aluminum for maximum strength and durability. We then use a state of the art anodizing process to protect and color-enhance them. Every accessory is constructed of the highest quality materials to give them maximum service and life. Tigress uses only 300 series stainless or 316 Stainless Steel in every rod holder and outrigger holder.

We continue to expand our offerings of fine products and accessories making the Tigress product line of outriggers and gear the standard of quality and excellence.

## TABLE OF CONTENTS

|                                        |           |
|----------------------------------------|-----------|
| <b>NEW FOR 2024</b>                    | <b>4</b>  |
| <b>MATE SERIES</b>                     | <b>6</b>  |
| <b>MOUNTS</b>                          | <b>10</b> |
| <b>OUTRIGGERS</b>                      | <b>12</b> |
| <b>OUTRIGGING SYSTEMS</b>              | <b>14</b> |
| <b>RIGGING KITS</b>                    | <b>16</b> |
| <b>MOUNTING ACCESSORIES</b>            | <b>20</b> |
| <b>DREDGE BOOM</b>                     | <b>22</b> |
| <b>ROD HOLDERS</b>                     | <b>24</b> |
| <b>ROD HOLDER ACCESSORIES</b>          | <b>28</b> |
| <b>PORTABLE ROD HOLDER ACCESSORIES</b> | <b>30</b> |
| <b>ACCESSORIES</b>                     | <b>32</b> |
| <b>KITES</b>                           | <b>34</b> |
| <b>KITE ROD HOLDER &amp; CLUSTERS</b>  | <b>36</b> |
| <b>KITE ACCESSORIES</b>                | <b>38</b> |
| <b>MARINE ACCESSORIES</b>              | <b>42</b> |





NEW FOR 2025

### ECONOMY PITCH BAIT TUBE

- Perfect for Ballyhoo pitch baits
- PVC with suction cup
- Portable and stoable

| PART | 88454 |
|------|-------|
|------|-------|



### NEEDLE BAND HOLDER

- Used to hold needle and rubber bands for bridling baits while kite fishing or trolling
- Dual suckers keep device secure on flat surfaces
- 4 magnets to securely hold rigging needle while not in use
- Multiple ridged tube allows anglers to remove band easily with a needle or hook
- Low profile allows device to be close to reels without interfering with anglers fishing

| PART | 88455 |
|------|-------|
|------|-------|



### SCREWLESS 9" ROD HOLDER

- 316 Stainless Steel
- 2 1/8" Cut Out
- Requires Rod Holder Fastener

| PART  | DEGREE |
|-------|--------|
| 77275 | 30°    |
| 77276 | 15°    |
| 77277 | 0°     |



### SCREWLESS 10 1/2" SWIVEL ROD HOLDER

- 316 Stainless Steel
- 2 5/8" Cut Out
- Requires Rod Holder Fastener

| PART  | DEGREE |
|-------|--------|
| 77278 | 0°     |
| 77279 | 15°    |



### BACKING PLATES

- For screwless rod holders

| PART    | SIZE    |
|---------|---------|
| 77275-1 | 9"      |
| 77278-1 | 10 1/2" |



### ROD HOLDER FASTENERS

- For screwless rod holders
- Requires 1/2" ratchet

| PART    | SIZE    |
|---------|---------|
| 77274   | 9"      |
| 77274-1 | 10 1/2" |



**Tee Adapter**  
(3) - 1/2" Barbs

| PART | T12 |
|------|-----|
|------|-----|



**Elbow Adapter**  
3/8" NPT, 3/4" Barb

| PART | EL3812 |
|------|--------|
|------|--------|

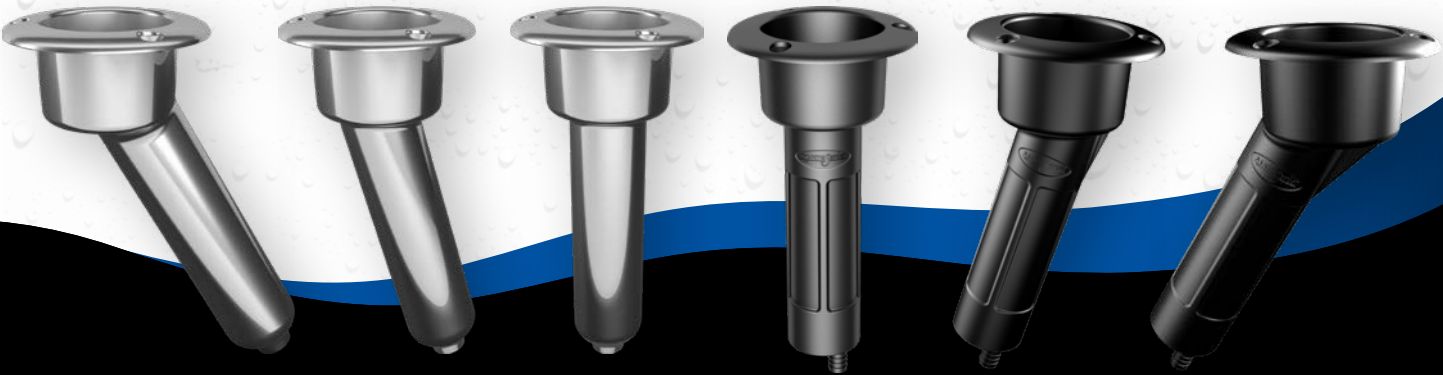


**Straight Adapter**  
3/8" NPT, 3/4" Barb

| PART | A3812 |
|------|-------|
|------|-------|



THE PERFECT SOLUTION



COMBINATION  
ROD & CUP HOLDERS

Appearances can be deceiving – at first glance, Mate Series seems like your standard premium stainless cup holder, but take a closer look, and you’ll discover its secret identity – a hidden rod holder built seamlessly into the cup, redefining convenience on the water.



STAINLESS 316 Stainless

ROUND



DRAIN, ROUND  
TOP ROD & CUP  
HOLDER

|     |        |
|-----|--------|
| 0°  | C1000D |
| 15° | C1015D |
| 30° | C1030D |



OPEN, ROUND  
TOP ROD & CUP  
HOLDER

|     |         |
|-----|---------|
| 0°  | C1000ND |
| 15° | C1015ND |
| 30° | C1030ND |

OVAL



DRAIN, OVAL  
TOP ROD & CUP  
HOLDER

|     |        |
|-----|--------|
| 0°  | C2000D |
| 15° | C2015D |
| 30° | C2030D |



OPEN, OVAL  
TOP ROD & CUP  
HOLDER

|     |         |
|-----|---------|
| 0°  | C2000ND |
| 15° | C2015ND |
| 30° | C2030ND |

SCREWLESS



DRAIN, ROUND  
TOP ELITE  
SCREWLESS

|     |         |
|-----|---------|
| 0°  | C1000DS |
| 15° | C1015DS |
| 30° | C1030DS |



DRAIN, OVAL  
TOP ELITE  
SCREWLESS

|     |         |
|-----|---------|
| 0°  | C2000DS |
| 15° | C2015DS |
| 30° | C2030DS |



ABS PLASTIC



Drain, Round Top (BLK)

|     |         |
|-----|---------|
| 0°  | P1000DB |
| 15° | P1015DB |
| 30° | P1030DB |



Drain, Round Top (WHT)

|     |         |
|-----|---------|
| 0°  | P1000DW |
| 15° | P1015DW |
| 30° | P1030DW |



Closed, Oval Top Kit for Kayaks

|     |         |
|-----|---------|
| 30° | P2030BK |
|-----|---------|



Open, Oval Top (BLK)

|     |         |
|-----|---------|
| 30° | P2030ND |
|-----|---------|



Drain, Oval Top (WHT)

|     |        |
|-----|--------|
| 30° | P2030W |
|-----|--------|



Kayak Seal Kit  
For ABS Rod & Cupholders

|      |         |
|------|---------|
| PART | KG2000B |
|------|---------|

FLAG POLES



Flag Pole

36" Pole Only  
72" Pole Only

|     |      |
|-----|------|
| 36" | FP36 |
| 72" | FP72 |



USA Flag Pole

36" with 12" x 18" American Flag  
72" with 3" x 5" American Flag

|     |         |
|-----|---------|
| 36" | FP36USA |
| 72" | FP72USA |



Dive Flag Pole

36" with 20" x 24" Dive Flag  
72" with 20" x 24" Dive Flag

|     |          |
|-----|----------|
| 36" | FP36DIVE |
| 72" | FP72DIVE |

ACCESSORIES



Backing Plate  
316 Stainless  
For use with  
ALL Mate Series

|      |     |
|------|-----|
| PART | CBP |
|------|-----|



Backing Plate - SST  
316 Stainless  
For all Mate Series  
except Elite

|      |      |
|------|------|
| PART | CBPT |
|------|------|



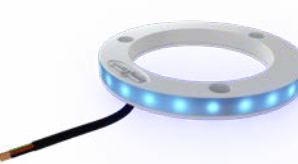
316 Stainless Cap  
Fits all round  
plastic rodholder  
cupholders

|      |        |
|------|--------|
| PART | 1000CS |
|------|--------|



Cast SST Cup Holder  
For Ø 3 1/2 hole  
Ø 1/2 Drain Barb

|      |         |
|------|---------|
| PART | C1000CH |
|------|---------|



RGB LED Lights  
For Round Tops  
Up to 16 million colors  
12v Required

|      |         |
|------|---------|
| PART | LED1000 |
|------|---------|



Tee Adapter  
(3) - 1/2" Barbs

|      |     |
|------|-----|
| PART | T12 |
|------|-----|



Elbow Adapter  
3/8" NPT, 3/4" Barb

|      |        |
|------|--------|
| PART | EL3812 |
|------|--------|



Threaded  
Backing Plate - SST  
For existing Ø 3 3/4 hole  
For SST Round Tops. Not for  
use with Elite Models

|      |          |
|------|----------|
| PART | C1334314 |
|------|----------|



Threaded Backing Plate  
- ABS Plastic  
For Ø 3 3/4 hole  
For ROUND top  
ABS Models

|      |          |
|------|----------|
| PART | P1334314 |
|------|----------|



316 Stainless Oval Cap  
Fits all oval plastic rod  
holders

|      |        |
|------|--------|
| PART | 2000CS |
|------|--------|



Rod Holder Swivel  
Marine Grade  
Stainless Steel

|      |     |
|------|-----|
| PART | RHS |
|------|-----|



Drain Cap  
Fits 2" OD

|      |      |
|------|------|
| PART | DR1B |
|------|------|



Straight Adapter  
3/8" NPT, 3/4" Barb

|      |       |
|------|-------|
| PART | A3812 |
|------|-------|



# 2 MOUNTS

## XD CRANK TOP MOUNT

- For use on sport fishing boats up to 50 feet
- Adjustable upper arm with 'Run' & 'Laydown' position stops.
- User friendly folding crank handle with integrated drive brake.
- Upper-arm adjusting ball-bearing drive system, with integrated balance spring assist.
- Extreme duty top plate, upper arm and housings for outriggers up to 22ft in length.
- Stainless steel & bronze bushed head pivot for maximum trolling strength & durability.
- Unique invertible Tigress handle design for use on both soft and hard tops over 2" thick
- Accepts all Tigress XD 1-1/2" butt diameter outriggers and XD 1-1/8" butts using adapter
- Fits Tigress and other industry standard 4" x 6" mounting plates (four 5/16" diameter fasteners)
- Extreme-duty 316L stainless steel and anodized aluminum and sealed construction with UV protection
- 24 adjustable/locking system positions featuring Tigress XD 316L stainless steel design
- Ergonomic 316 stainless steel mirror-polished lever design with inverting ability for extra hand clearance on the thickest tops.
- User friendly underside lever actuation, with 8 optional indexable set-up positions
- Fits through all standard 3" diameter mounting plates and hard top holes
- Sold as pair
- 3-Year limited warranty



|      |       |
|------|-------|
| PART | 88880 |
|------|-------|

## XD TOP MOUNT

- For use on sport fishing boats up to 40 feet
- Unique invertible Tigress handle design for use on both soft and hard tops over 2" thick
- Accepts all Tigress XD 1-1/2" butt diameter outriggers and XD 1-1/8" butts using adapter
- Fits Tigress and other industry standard 4" x 6" mounting plates (four 5/16" diameter fasteners)
- Extreme-duty 316 Stainless Steel and anodized aluminum and sealed construction with UV protection
- 24 adjustable/locking system positions (15° increments) featuring Tigress XD 316 Stainless Steel design 19 upper-arm angle/locking positions (10° increments) using
- 3-Year limited warranty
- Tigress XD 316 stainless steel detent design with ambidextrous horizontal stops
- Large 3-lobe UV ergonomic knob with integral detent feature when changing outrigger elevation
- Ergonomic 316 stainless steel mirror-polished lever design with inverting ability for extra hand clearance on the thickest tops.
- User friendly underside lever actuation, with 8 optional indexable set-up positions
- Standard 1/4" diameter locking stainless steel push-in-pin for outriggers
- Fits through all standard 3" diameter mounting plates and hard top holes
- Sold as pair



## XD BAY SERIES TOP MOUNT

- For use on sport fishing boats up to 40 feet
- Accepts all Tigress XD 1-1/8" butt diameter outriggers.
- 19 upper-arm angle/locking (@10 deg.) using Tigress XD 316L Stainless Steel tooth locking design with horizontal stops for Trailering and bridges.
- Large 3-lobe UV ergonomic knob for changing and locking the outriggers' elevation
- 24 adjustable/locking system positions (15 degree increments) featuring Tigress XD 316L stainless steel locking design with HD spring return.
- User friendly side operating lever.
- Large 'XD' aluminum 14.5mm thick baseplate with four corner mounting. 5/16" through x 3.000" x 5.000" 4-bolt pattern
- Fits Tigress and other industry standard 4" x 6" mounting plates (four 5/16" diameter fasteners)
- Extreme-duty 316L stainless steel and anodized aluminum and fully sealed construction with UV protection
- Ambidextrous mounting option to accommodate the side that the tri-lobe knob is positioned on.
- 3-Year limited warranty



## XD CENTER RIGGER TOP MOUNT

- For use on sport fishing boats up to 40 feet
- Accepts all Tigress XD 1-1/8" butt diameter center riggers
- 19 upper-arm angle/locking (@10 deg.) using Tigress XD 316 stainless steel tooth locking design with horizontal stops
- Large 'XD' aluminum 12mm thick baseplate with four corner mounting
- Extreme-duty 316 stainless steel and anodized aluminum construction
- Ambidextrous mounting option to accommodate the side the tri-lobe knob is positioned on
- 1/4" through x 4.050" x 2.625" 4-bolt pattern
- Standard 1/4" diameter stainless steel locking push-in-pin for outriggers
- Large 3-lobe UV ergonomic knob for changing and locking the outriggers' elevation
- 3-Year limited warranty



|      |       |
|------|-------|
| PART | 88860 |
|------|-------|





# 3 OUTRIGGERS



## TELESCOPING ALUMINUM OUTRIGGERS

- For use on sport fishing boats up to 40 ft.
- Patented Tigress Track® Internal Tracking System, now with dual-tracks for increased tube strength and guiding alignment
- Larger tube diameters and wall thicknesses for increased strength and durability
- Anodized cold draw tubes inside and out for maximum protection from corrosion
- Double-locking and polished 316 Stainless Steel push-buttons on the lower tube sections for less 'hole wallowing'
- Includes a handy, heavy duty mesh storage bag
- Redesigned rings and tips
- 316 Stainless Steel polished eyelets
- UVI marine grade thermoplastic internal bushings for trouble free sliding operation
- Double 1/4" cross-holes in the butt ends in much thicker wall in anodized aluminum for the push-in-pin
- UVI thermoplastic butt sleeves to fit all 1-1/2" top and center rigger mounts
- Retracts to under 6' for trailering, bridges and storage
- 3-Year limited warranty
- Sold as pair



Patent #7,025,015 B2

| PART    | LENGTH | BASE OD | COLOR  |
|---------|--------|---------|--------|
| 88923   | 15'    | 1-1/8"  | SILVER |
| 88923-1 | 15'    | 1-1/8"  | BLACK  |
| 88924   | 15'    | 1-1/2"  | SILVER |
| 88924-1 | 15'    | 1-1/2"  | BLACK  |
| 88925   | 18'    | 1-1/2"  | SILVER |
| 88925-1 | 18'    | 1-1/2"  | BLACK  |



## 3K CARBON FIBER TELESCOPING OUTRIGGERS

- For use on sport fishing boats up to 40 feet
- Patented Tigress Track® Internal Tracking System
- 3K carbon fiber woven finish
- Retracts to under 6' for trailering, bridges and storage
- 316 Stainless Steel polished eyelets
- Redesigned rings and tips
- Lightest telescoping outrigger in the industry
- UVI thermoplastic butt sleeves to fit all Tigress top mounts
- Includes a handy, heavy duty mesh storage bag
- 1-Year limited warranty
- Sold as pair



Patent #7,025,015 B2

| PART    | LENGTH | BASE OD | COLOR              |
|---------|--------|---------|--------------------|
| 88679   | 18'    | 1-1/2"  | MATTE BLACK/BLACK  |
| 88679-1 | 18'    | 1-1/2"  | MATTE BLACK/SILVER |
| 88679-3 | 21'    | 1-1/2"  | MATTE BLACK/BLACK  |
| 88679-4 | 21'    | 1-1/2"  | MATTE BLACK/SILVER |



## 3K CARBON FIBER TELESCOPING CENTER OUTRIGGERS

- For use on sport fishing boats up to 40 feet
- Patented Tigress Track® Internal Tracking System
- 3K carbon fiber woven finish
- Retracts to under 6' for trailering, bridges and storage
- 316 Stainless Steel polished eyelets
- Redesigned rings and tips
- Lightest telescoping center rigger in the industry
- UVI thermoplastic butt sleeves to fit all Tigress top mounts
- Includes a handy, heavy duty mesh storage bag
- 1-Year limited warranty

| PART    | LENGTH | BASE OD | COLOR              |
|---------|--------|---------|--------------------|
| 88679-2 | 8'     | 1-1/8"  | MATTE BLACK/SILVER |
| 88679-5 | 8'     | 1 1/8"  | MATTE BLACK/BLACK  |



## BAY SERIES TOP MOUNT

- For use on sport fishing boats up to 40 ft.
- 1-1/8" butt OD
- Patented Tigress Track® Internal Tracking System, now with dual-tracks for increased tube strength and guiding alignment
- Larger tube diameters and wall thicknesses for increased strength and durability
- Anodized cold draw tubes inside and out for maximum protection from corrosion
- Redesigned rings and tips
- Double-locking and polished 316 Stainless Steel push-buttons on the lower tube sections for less 'hole wallowing'
- 316 Stainless Steel polished eyelets with smooth through centers
- UVI marine grade thermoplastic internal bushings for trouble free sliding operation
- Double 1/4" cross-holes in the butt ends in much thicker wall in anodized aluminum for the push-in-pin
- UVI thermoplastic butt sleeves to fit all top and center rigger mounts
- Retracts to under 5' 5" for trailering, bridges and storage
- Includes a handy, heavy duty mesh storage bag
- 3-Year limited warranty

| PART    | LENGTH | BASE OD | COLOR  |
|---------|--------|---------|--------|
| 88921   | 8'     | 1-1/8"  | SILVER |
| 88921-1 | 8'     | 1-1/8"  | BLACK  |
| 88922   | 12'    | 1-1/8"  | SILVER |
| 88922-1 | 12'    | 1-1/8"  | BLACK  |



Patent #7,025,015 B2

## TELESCOPING FIBERGLASS OUTRIGGER

- An economical alternative to aluminum outriggers for 18' to 28' boats
- 15' telescoping, three-section, heavy duty fiberglass outriggers feature heavy line guides for easy rigging
- Only mates with 1 1/8" gunnel and side mount outrigger bases
- Includes a vinyl bag for storage
- Retracts to less than 6'

| PART  | LENGTH | BASE OD | COLOR      |
|-------|--------|---------|------------|
| 88200 | 15'    | 1-1/8"  | WHITE/BLUE |



## FIXED ALUMINUM OUTRIGGER

- Constructed of heavy duty anodized aluminum with nylon guide assembly and stainless steel line guides
- Four section, screw together assembly with black anodized aluminum tip
- Only mates with 1 1/8" gunnel and side mount outrigger bases

| PART  | LENGTH | BASE OD | COLOR        |
|-------|--------|---------|--------------|
| 88220 | 15'    | 1-1/8"  | SILVER/BLACK |







# OUTRIGGING SYTEMS



## CRANK TOP MOUNT SYSTEM

- XD Crank Top Mount
- XD Tigress Track® Telescoping Outriggers
- Pro Series Double Rigging Kit

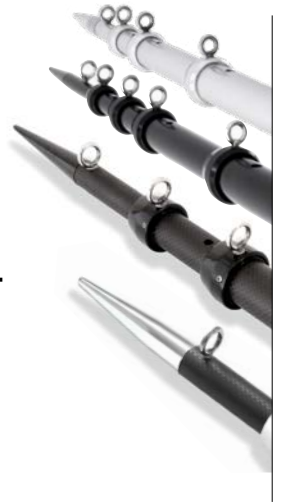
| PART     | MOUNT          | OUTRIGGER               | RIGGING KIT       |
|----------|----------------|-------------------------|-------------------|
| 88825-2  | XD CRANK MOUNT | 18' SILVER XD           | PRO SERIES DOUBLE |
| 88825-3  | XD CRANK MOUNT | 18' BLACK XD            | PRO SERIES DOUBLE |
| 88679-02 | XD CRANK MOUNT | 18' CARBON FIBER B/B XD | PRO SERIES DOUBLE |
| 88679-03 | XD CRANK MOUNT | 18' CARBON FIBER B/S XD | PRO SERIES DOUBLE |



## TOP MOUNT SYSTEM

- XD Top Mount
- XD Tigress Track® Telescoping Outriggers
- Premium Rigging Kit
- Black mesh carry bag for storage

| PART     | MOUNT        | OUTRIGGER               | RIGGING KIT |
|----------|--------------|-------------------------|-------------|
| 88824    | XD TOP MOUNT | 15' SILVER XD           | ELITE       |
| 88824-1  | XD TOP MOUNT | 15' BLACK XD            | ELITE       |
| 88825    | XD TOP MOUNT | 18' SILVER XD           | ULTIMATE    |
| 88825-1  | XD TOP MOUNT | 18' BLACK XD            | ULTIMATE    |
| 88679-00 | XD TOP MOUNT | 18' CARBON FIBER B/B XD | ULTIMATE    |
| 88679-01 | XD TOP MOUNT | 18' CARBON FIBER B/S XD | ULTIMATE    |



## BAY SERIES TOP MOUNT SYSTEM

- XD Bay Series mount
- XD Tigress Track® Telescoping Center Riggers
- Deluxe Rigging Kit

| PART    | MOUNT  | OUTRIGGER         | RIGGING KIT |
|---------|--------|-------------------|-------------|
| 88823-2 | XD BAY | 15' 1-1/8" SILVER | DELUXE      |
| 88823-3 | XD BAY | 15' 1-1/8" BLACK  | DELUXE      |



## CENTER RIGGER SYSTEM

- XD Center Rigger Mount
- XD Tigress Track® Telescoping Center Riggers
- Center Rigger Rigging Kit

| PART    | MOUNT     | OUTRIGGER     | RIGGING KIT |
|---------|-----------|---------------|-------------|
| 88621   | XD CENTER | 8' SILVER XD  | CENTER      |
| 88621-1 | XD CENTER | 8' BLACK XD   | CENTER      |
| 88622   | XD CENTER | 12' SILVER XD | CENTER      |
| 88622-1 | XD CENTER | 12' BLACK XD  | CENTER      |



## ROD HOLDER/OUTRIGGER TELESCOPING SYSTEM

ECONOMY VERSION OF A TELESCOPING OUTRIGGER SYSTEM

- Economy Rigging Kit
- 1-1/8" fabricated flush mount outrigger holders
- 1-1/8" fiberglass poles

| PART    | LENGTH | COLOR      | MOUNT |
|---------|--------|------------|-------|
| 88200-1 | 15'    | WHITE/BLUE | 88500 |







# 5 RIGGING KITS

## PRO SERIES SINGLE RIGGING KIT

- Mesh bag
- 50yd spool LP 400lb blue outrigger mono
- 2 1-1/4" black stops, 2 release clips
- 2 Tigress single locking halyards
- Crimps and snap lock swivels

|             |         |
|-------------|---------|
| <b>PART</b> | 88645-1 |
|-------------|---------|



## PRO SERIES DOUBLE RIGGING KIT

- Mesh bag
- 100yd spool LP 400lb blue outrigger mono
- 4 1-1/4" black stops
- 4 release clips
- 2 Tigress double locking halyards
- 2 SS teaser rings, crimps, snap lock swivels.

|             |         |
|-------------|---------|
| <b>PART</b> | 88646-1 |
|-------------|---------|



## PRO SERIES TRIPLE RIGGING KIT

- Mesh bag
- 100 yd spool LP 400lb blue outrigger mono
- 6 1-1/4" black stops, 6 release clips
- 2 Tigress triple locking halyards
- 2 SS teaser rings
- Crimps and snap lock swivels

|             |         |
|-------------|---------|
| <b>PART</b> | 88647-1 |
|-------------|---------|



## PRO SERIES CENTER RIGGING KIT

- Mesh bag
- 50yd spool LP 400lb blue outrigger mono
- 1 1-1/4" black stop
- 1 release clip
- 1 Tigress single locking halyard
- Crimps and snap lock swivels

|             |         |
|-------------|---------|
| <b>PART</b> | 88610-1 |
|-------------|---------|



## PRO SERIES TIGRESS LOCKING HALYARDS

- Locks outrigger line in place with no slip or creep
- 12" bungee with SS snap lock swivel

| PART  | DESCRIPTION            |
|-------|------------------------|
| 88645 | SINGLE LOCKING HALYARD |
| 88646 | DOUBLE LOCKING HALYARD |
| 88647 | TRIPLE LOCKING HALYARD |





All kits feature top quality materials and are ready to be installed. Each kit includes clips, mounting hardware, cord, snubbers, glass rings or snaps and pulleys.

## ECONOMY

AFFORDABLE KIT DESIGNED FOR SMALL BOAT RIGGERS UP TO 15'

- Pair of high impact release clips
- Pair of 1-1/4" cork stops
- Pair of glass ring snubbers
- Pair of eye straps with screws



| PART  | DESCRIPTION               |
|-------|---------------------------|
| 88600 | 100' OF WHITE NYLON BRAID |

## ELITE

TOP QUALITY KIT

- Pair of EZ release clips
- Pair of 1-3/4" cork stops
- Pair of single swivel snubbers
- Pair of eye straps with screws
- 4 leader snaps



| PART    | DESCRIPTION                           |
|---------|---------------------------------------|
| 88603   | 100' OF BLACK NYLON BRAID             |
| 88603-1 | 100' OF 400 LB. BLACK MONO & 4 CRIMPS |

## CENTER RIGGER KIT

- High impact release clip
- 1-1/4" cork stop
- Glass ring snubber
- Eye strap with screws
- 2 leader snaps
- 30' of black nylon braid



| PART | 88610 |
|------|-------|
|------|-------|

## DELUXE

TOP QUALITY KIT

- Pair of high impact release clips
- Pair of 1-1/4" cork stops
- Pair of glass ring snubbers
- Pair of eye straps with screws
- 4 leader snaps



| PART  | DESCRIPTION                           |
|-------|---------------------------------------|
| 88601 | 100' OF BLACK NYLON BRAID             |
| 88602 | 100' OF 400 LB. BLACK MONO & 4 CRIMPS |

## ULTIMATE

FOR DOUBLE RIGGING YOUR OUTRIGGERS FOR RIGGERS UP TO 22'

- 2 pairs of EZ release clips
- 2 pairs of 1-3/4" cork stops
- Pair of double swivel snubbers
- Pair of eye straps with screws
- 8 leader snaps



| PART    | DESCRIPTION                            |
|---------|----------------------------------------|
| 88605   | 200' OF BLACK NYLON BRAID              |
| 88605-1 | 200' OF 400 LB. BLACK MONO & 12 CRIMPS |

## SNUBBERS

| TYPE | PART    | DESCRIPTION                                     |
|------|---------|-------------------------------------------------|
| A    | 88620   | 12" ECONOMY SNUBBER                             |
| B    | 88624   | 16" DELUXE SNUBBER                              |
| D    | 88628   | 16" DELUXE PRO SNUBBER                          |
| E    | 88632   | 16" ELITE SNUBBER                               |
| G    | 88635   | 6" ELITE SNUBBER W/BALL BEARING COASTLOCK SNAP  |
| G    | 88635-1 | 12" ELITE SNUBBER W/BALL BEARING COASTLOCK SNAP |
| G    | 88635-2 | 18" ELITE SNUBBER W/BALL BEARING COASTLOCK SNAP |
| H    | 88636   | 12" ELITE SNUBBER W/SS SNAP                     |



## ACCESSORIES

| TYPE | PART  | DESCRIPTION                                   |
|------|-------|-----------------------------------------------|
| A    | 88630 | SINGLE STAINLESS SWIVEL                       |
| B    | 88640 | DOUBLE STAINLESS SWIVEL                       |
| D    | 88650 | PAIR OF GLASS OUTRIGGER RINGS                 |
| E    | 88652 | PAIR OF 1-1/4" CORK STOPS                     |
| F    | 88654 | PAIR OF 1-3/4" CORK STOPS                     |
| G    | 88656 | PAIR OF OUTRIGGER RELEASE CLIPS               |
| H    | 88657 | DOWN RIGGER RELEASE CLIP                      |
| I    | 88659 | FLAT LINE RELEASE CLIP                        |
| J    | 88660 | PAIR OF STAINLESS STEEL RINGS                 |
| K    | 88664 | PAIR OF 316 STAINLESS SNAPS                   |
| L    | 88666 | PAIR OF NICKEL PLATED SNAPS                   |
| M    | 88667 | PAIR OF STAINLESS PAD EYES W/STAINLESS SCREWS |
| N    | 88668 | ANTENNA FLAG CLIP                             |
| O    | 88669 | HALYARD FLAG CLIP                             |
| P    | 88670 | 100' OF 400 LB. TEST BLACK MONO (DIA. 2.2 MM) |
| Q    | 88671 | 100' OF 300 LB. BLACK NYLON BRAID             |
| Q    | 88672 | 100' OF 375 LB. WHITE NYLON BRAID             |
| S    | 88690 | PAIR OF 1-1/4" BLACK PLASTIC STOPS            |
| T    | 88695 | EZ OUTRIGGER RELEASE CLIPS (BLACK)            |
| U    | 88697 | PORTABLE RELEASE CLIP                         |
| V    | 88642 | TAG LINE WEIGHT                               |







## CENTER RIGGER HOLDER

- Clamp-on center rigger holder
- 1-5/16" IPS pipe clamp with 1-1/8" holder

| PART | 88150 |
|------|-------|
|------|-------|



## GUNNEL MOUNT BACKING PLATES

- PLEASE USE WITH PART # AS FOLLOWS:
- Gunnel mount and side mount backing plates
  - Made of heavy gauge stainless steel
  - Sized for cast outrigger holders only

| GUNNEL MOUNT       | SIDE MOUNT         |
|--------------------|--------------------|
| 88502-1 WITH 88502 | 88505-1 WITH 88505 |
| 88506-1 WITH 88506 | 88508-1 WITH 88508 |



## T-TOP ALUMINUM WELD-ON EXTRUSIONS

- All backing & mounting plates are pre-drilled for installation
- All mounting holes are 3"

| PART    | LENGTH | WIDTH  | HEIGHT |
|---------|--------|--------|--------|
| 88932   | 5      | 6.5"   | 0.25"  |
| OOMP-20 | 20"    | 5.516" | 1.25"  |
| OOMP-30 | 30"    | 5.516" | 1.25"  |



## OUTRIGGER HOLDER REDUCERS

DOWNSIZE YOUR OUTRIGGER HOLDERS.

| PART    | OD                 | ID     |
|---------|--------------------|--------|
| 88680   | REDUCE FROM 1-1/2" | 1-1/8" |
| 88680-1 | REDUCE FROM 1-7/8" | 1-1/2" |



## OUTRIGGER HOLDERS AND REPLACEMENT TUBES

| GUNNEL MOUNT | SIZE      | MATERIAL       |
|--------------|-----------|----------------|
| 88500        | 1-1/8" ID | FABRICATED 304 |
| 88502        | 1-1/8" ID | CAST 316       |
| 88506        | 1-1/2" ID | CAST 316       |

| SIDE MOUNT | SIZE      | MATERIAL       |
|------------|-----------|----------------|
| 88504      | 1-1/8" ID | FABRICATED 304 |
| 88505      | 1-1/8" ID | CAST 316       |
| 88508      | 1-1/2" ID | CAST 316       |

| SIDE MOUNT | SIZE      | MATERIAL  |
|------------|-----------|-----------|
| 88501      | 1-1/8" ID | CAST BASE |
| 88503      | 1-1/8" ID | CUT BASE  |
| 88507      | 1-1/2" ID | CAST BASE |



## OUTRIGGER LINE HOLDER

- Fits 1-1/8" Outrigger Poles
- Keeps outrigger lines organized while poles are collapsed
- Easy clamp on installation
- Sold as 2 Pairs

| PART | 88691 |
|------|-------|
|------|-------|



## TOP MOUNT WEDGES

Angular adjusting wedges to straighten the top mount in installation allow for less stress on the top and smoother deployment of your outriggers.

| PART  | DEGREE |
|-------|--------|
| 88934 | 7°     |
| 88936 | 9°     |
| 88938 | 11°    |







# DREDGE BOOM



## POSEIDON DREDGE BOOM

- Allows smaller center consoles to fish like bigger boats
- Outpulls any other dredge on the market
- 7' black fiberglass boom
- 3/0 Folbe heavy-duty block pulley
- Ideal for LP or Hooker electric reels
- 316 stainless steel hardware
- Comes with 14' nylon safety tether with 316 stainless steel carabiner



| PART  | LENGTH | COLOR        |
|-------|--------|--------------|
| 88443 | 7'     | BLACK/SILVER |



## POSEIDON DREDGE RIGGING KIT

- 50 yards of 400lb Momoi Outrigger Mono
- 500 lb stainless dredge dog swivel
- 29 mm Harken Carbo Air Block
- 2" spring gate snap
- Sleeve crimps

|      |         |
|------|---------|
| PART | 88443-1 |
|------|---------|



## DREDGE BOOM SAFETY TETHER

- 14' nylon safety tether with 316 stainless steel carabiner
- For use with XD Poseidon Dredge Boom or big game trolling rods

|      |       |
|------|-------|
| PART | 88446 |
|------|-------|



## LITE & HEAVY SAFETY TETHER

- Keep valuable fishing equipment tethered to boat
- UV Resistant Black Vinyl Coating
- SS Snaps

| PART    | DESCRIPTION                                                                                                    |
|---------|----------------------------------------------------------------------------------------------------------------|
| 88440   | <ul style="list-style-type: none"><li>• LITE SAFETY TETHER</li><li>• 630LB BREAKING STRENGTH</li></ul>         |
| 88440-1 | <ul style="list-style-type: none"><li>• HEAVY SAFETY TETHER</li><li>• HEAVY 1260LB BREAKING STRENGTH</li></ul> |







# ROD HOLDERS

## OVAL HEAD GUNNEL ROD HOLDERS

MEDIUM OVAL GUNNEL ROD HOLDERS

| PART  | LENGTH | ANGLE    | ID     |
|-------|--------|----------|--------|
| 88525 | 9"     | 30° HEAD | 1-5/8" |
| 88527 | 9"     | 0° HEAD  | 1-5/8" |
| 88529 | 9"     | 15° HEAD | 1-5/8" |

3.28" x 4.06"  
HEAD SIZE



OVAL HEAD



CAST BAR



## SWIVEL ROD HOLDERS

LARGE OVAL GUNNEL ROD HOLDERS

| PART                   | LENGTH  | ANGLE    | ID     |
|------------------------|---------|----------|--------|
| 88522                  | 10-1/2" | 0° HEAD  | 1-7/8" |
| 88524                  | 10-1/2" | 15° HEAD | 1-7/8" |
| BACKING PLATE: 88530-3 |         |          |        |

| PART                   | LENGTH  | ANGLE    | ID     |
|------------------------|---------|----------|--------|
| 88522SM                | 10-1/2" | 0° HEAD  | 1-7/8" |
| 88522XL                | 12-1/2" | 0° HEAD  | 1-7/8" |
| 88524XL                | 12-1/2" | 15° HEAD | 1-7/8" |
| 88524SM                | 10-1/2" | 15° HEAD | 1-7/8" |
| BACKING PLATE: 88530-3 |         |          |        |

3.85" x 4.88"  
3 HOLE OVAL HEAD

4.25" x 4.75"  
4 HOLE EXTRA LONG SWIVEL  
RECTANGULAR HEAD



RECTANGULAR  
HEAD



OVAL HEAD



SWIVEL BASE



## ROUND HEAD CLOSED BASE

HEAVY DUTY WITH DRAIN HOLE TO ACCEPT 1/4" NPT PIPE TO HOSE FITTING

| PART                              | LENGTH | ANGLE    | ID     |
|-----------------------------------|--------|----------|--------|
| 77900                             | 9"     | 30° HEAD | 1-5/8" |
| 77901                             | 9"     | 15° HEAD | 1-5/8" |
| 77902                             | 9"     | 0° HEAD  | 1-5/8" |
| BACKING PLATE: 77900-2 OR 88525-1 |        |          |        |

3.85"  
HEAD SIZE



ROUND HEAD



CLOSED BASE



## OVAL HEAD CLOSED BASE

- Heavy duty oval head closed end base, with drain hole to accept 1/4" NPT pipe to hose fitting.

| PART                   | LENGTH | ANGLE    | ID     |
|------------------------|--------|----------|--------|
| 88535                  | 9"     | 30° HEAD | 1-5/8" |
| 88537                  | 9"     | 0° HEAD  | 1-5/8" |
| 88539                  | 9"     | 15° HEAD | 1-5/8" |
| BACKING PLATE: 88525-1 |        |          |        |

3.28"  
HEAD SIZE



OVAL HEAD



CLOSED BASE



PATENT # 8,291,636



ECONOMY ROD HOLDERS

| PART  | ANGLE | SIZE           | DESCRIPTION            |
|-------|-------|----------------|------------------------|
| 77270 | 0°    | 9" X 1-5/8" ID | ECONOMY ROD HOLDER 0°  |
| 77271 | 15°   | 9" X 1-5/8" ID | ECONOMY ROD HOLDER 15° |
| 77273 | 30°   | 9" X 1-5/8" ID | ECONOMY ROD HOLDER 30° |



ROD HOLDER DRAINAGE CAP

- Covers rod holder base, allowing drainage tubes to be connected
- Mates with 77270, 77271, 77273
- Locks in place with twist



| PART | 77271-01 |
|------|----------|
|------|----------|

316 STAINLESS STEEL FLARED ROD HOLDER

- 10" weld on
- 316 Stainless Steel tapered without blade
- Heavy duty
- Rod holder ID 1-5/8"
- With vinyl liner



| PART | 88155 |
|------|-------|
|------|-------|

ROD RIGGER

- Allows for your rods to give you a better fishing spread.



| PART | 77173 |
|------|-------|
|------|-------|

316 STAINLESS STEEL ADJUSTABLE CLAMP-ON

- Choose the angle you need while providing the versatility of mounting either horizontally or vertically
- Clamp-on rod holders are sized IPS pipe
- Includes a heavy white vinyl liner

| PART  | SIZE   | ID     |
|-------|--------|--------|
| 88191 | 1"     | 1-5/8" |
| 88192 | 1-1/4" | 1-5/8" |
| 88193 | 1-1/2" | 1-5/8" |



CLAMP-ON ROD HOLDER

3/4" - 1" ADJUSTABLE

- Improved version of the old standard rail mount rod holder
- 316 Stainless Steel clamp mechanism with high polished stainless tube
- White vinyl liner for rod protection
- Fits 3/4" and 1" rails
- 9" x 2" OD base
- Rod holder ID 1-5/8"

| PART | 88176 |
|------|-------|
|------|-------|



SIDE MOUNT

316 STAINLESS STEEL 9" SIDE MOUNT

- Designed for applications where clamp-on or flush mount holders are not practical
- Can be mounted on any vertical flat surface
- White vinyl insert included to protect your rod

| PART | 88540 |
|------|-------|
|------|-------|



SWIVEL SIDE MOUNT

316 STAINLESS STEEL 9" SWIVEL SIDE MOUNT

- Designed for applications where clamp-on or flush mount holders are not practical
- Can be mounted on any vertical flat surface
- White vinyl insert included to protect your rod

| PART | 88542 |
|------|-------|
|------|-------|



WELD ON ROD HOLDERS

LINERS SEPARATE

| PART  | DESCRIPTION                                        |
|-------|----------------------------------------------------|
| 66412 | 10" WELD ON ALUMINUM FLARED ROD HOLDER W/OUT BLADE |
| 66242 | 10" WELD ON ALUMINUM FLARED ROD HOLDER W/BLADE     |
| 66122 | 10" WELD ON ALUMINUM ROD HOLDER W/LONG WEDGE       |
| 66262 | 10" WELD ON ALUMINUM ROD HOLDER W/STRAIGHT BLADE   |
| 88147 | 8.5" WELD ON ALUMINUM SPINNING ROD HOLDER          |

66412

66242

66122

66262

88147



STRAIGHT SIDE MOUNT

8-1/2" STRAIGHT SIDE MOUNT TRANSOM ROD OR CONSOLE ROD HOLDER

- 4 hole 3" x 4-1/2" brushed pad
- Includes liner

| PART | 66400 |
|------|-------|
|------|-------|



BOLT-ON TRANSOM MOUNT ROD HOLDER

- Polished aluminum
- 4 hole 3" x 4-1/2" brushed pad
- 10" flared rod holder
- Includes liner

| PART | 88146 |
|------|-------|
|------|-------|



CONSOLE DOUBLE SPINNING ROD HOLDER

- Polished aluminum
- Internal threaded 1/4-20
- Includes liner

| PART | 88144-2 |
|------|---------|
|------|---------|



TRANSOM MOUNT ROD HOLDERS

- Constructed of cold drawn anodized aluminum
- Includes white liners to protect your rod
- Available with either 4 or 5 rod holders

| PART    | LENGTH | DESCRIPTION     |
|---------|--------|-----------------|
| 88144   | 35"    | FIVE ROD HOLDER |
| 88144-1 | 28"    | FOUR ROD HOLDER |







# ROD HOLDER ACCESSORIES

## PIPE TO HOSE FITTINGS

| PART  | DESCRIPTION                  |
|-------|------------------------------|
| 77910 | 316 STAINLESS STEEL 1/4" IPS |
| 77911 | NYLON 1/4" IPS               |



## BACKING PLATES

| PART    | DESCRIPTION              |
|---------|--------------------------|
| 77900-2 | ROUND HEAD BACKING PLATE |
| 88525-1 | MEDIUM BACKING PLATE     |
| 88530-3 | UNIVERSAL BACKING PLATE  |



## LARGE ROD HOLDER EXTENDERS

- Stainless and nylon rod holder extenders to shorten your rod holder to fit your bent butt fishing rod
- We also offer our stainless steel swivel adapter to convert your standard rod holder to a swivel rod holder
- Fits most medium and large rod holders and are 1.51" wide
- Available in 2", 4" & 6"



| PART    | LENGTH | MATERIAL        |
|---------|--------|-----------------|
| 88686   | 6"     | STAINLESS STEEL |
| 88686-1 | 4"     | STAINLESS STEEL |
| 88686-2 | 2"     | STAINLESS STEEL |
| 88688   | 6"     | NYLON           |
| 88688-1 | 4"     | NYLON           |
| 88688-2 | 2"     | NYLON           |

## SWIVEL ADAPTER

2-1/2" L x 1-1/2" W - STAINLESS STEEL  
SWIVEL ROD HOLDER ADAPTER

| PART | 88687 |
|------|-------|
|------|-------|



2-1/2" L x 1-1/2" W

## TIGERFISH BAT

18" ALL ALUMINUM CONSTRUCTION  
WITH SOFT EVA FOAM GRIP

| PART | 88682 |
|------|-------|
|------|-------|



## T-TOP ROD SAFETY STRAPS

| PART | 88676 | PAIR |
|------|-------|------|
|------|-------|------|



## 10' SAFETY STRAP

| PART | 88675 | PAIR |
|------|-------|------|
|------|-------|------|



## VINYL LINERS

FOR ALUMINUM WELD-ON ROD HOLDERS

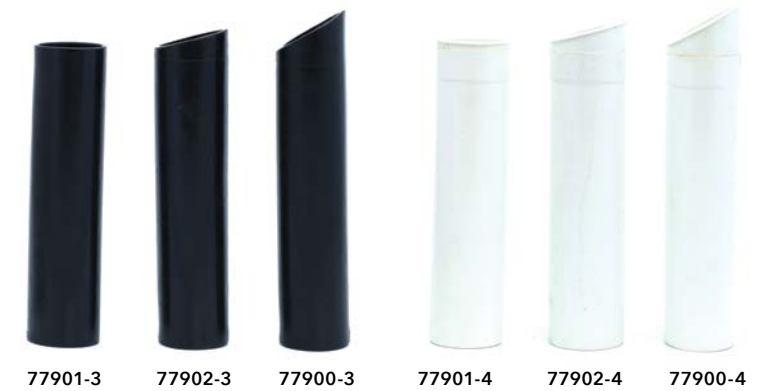
| PART      | DESCRIPTION                   | COLOR |
|-----------|-------------------------------|-------|
| 88152-3   | FOR 8-1/2" FLARED ROD HOLDERS | WHITE |
| 88152-4   | FOR 8-1/2" FLARED ROD HOLDERS | BLACK |
| 88152-5   | FOR 10" FLARED ROD HOLDERS    | WHITE |
| 88152-6   | FOR 10" FLARED ROD HOLDERS    | BLACK |
| LINERSRH3 | FOR SRH-3 UV PROTECTED PVC    | WHITE |
| LINERSRH4 | FOR SRH-3 UV PROTECTED PVC    | BLACK |
| 88152-8   | 10" FLARED RING TOP LINER     | WHITE |
| 88152-9   | 10" FLARED RING TOP LINER     | BLACK |



## VINYL LINERS

FOR GUNNEL ROD HOLDERS

| PART     | ANGLE | COLOR | LENGTH  |
|----------|-------|-------|---------|
| 77900-3  | 30°   | BLACK | 9"      |
| 77901-3  | 0°    | BLACK | 9"      |
| 77902-3  | 15°   | BLACK | 9"      |
| 77900-4  | 30°   | WHITE | 9"      |
| 77901-4  | 0°    | WHITE | 9"      |
| 77902-4  | 15°   | WHITE | 9"      |
| 88530-00 | 0°    | BLACK | 10-1/2" |
| 88530-15 | 15°   | BLACK | 10-1/2" |
| 88530-30 | 30°   | BLACK | 10-1/2" |
| 88530-2  | 0°    | WHITE | 12-1/2" |



ALL 10-1/2" VINYL INSERTS ARE FOR 88520 AND 88530 SERIES ROD HOLDERS

## CUP HOLDERS

### LARGE STAINLESS STEEL CUP INSERT

Fits 30 oz and 20 oz Tumblers.

MATES WITH 88586-1

| PART  | HOSE SIZE | HOLE SIZE |
|-------|-----------|-----------|
| 88586 | 3/8"      | 4-1/8"    |



### LARGE CUP HOLDER MOUNTING RING

| PART | 88586-1 |
|------|---------|
|------|---------|



### BLACK PLASTIC CUP INSERT

| PART | PCHE-BP |
|------|---------|
|------|---------|

w/Stainless Steel rim.  
MATES WITH PCHE

### STAINLESS STEEL CUP INSERT

| PART | 88585 |
|------|-------|
|------|-------|

MATES WITH PCHE



### CUP HOLDER MOUNTING RING

| PART | PCHE |
|------|------|
|------|------|







# PORTABLE ROD HOLDER ACCESSORIES



## COME ABOARD HANDLE

| PART | 88416 |
|------|-------|
|------|-------|

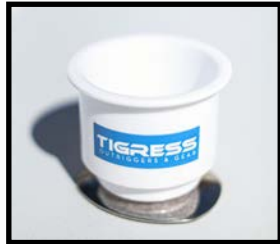
- Perfect for safely boarding and unboarding your boat
- Made out of anodized 6061 aluminum
- Finger molded aluminum handles for comfort grip
- Fits into standard 1 5/8" rod holder
- Gimbal butt for locking in rod holder
- Dimensions: 55" L x 8" W



## PORTABLE CUP HOLDER

| PART | 88415 |
|------|-------|
|------|-------|

- Easily adjusts for 15 and 30 degree rod holders
- Keeps your drinks readily available
- Add extra drink holders in an instant



## ADJUSTABLE DEEP DROP LEAD HOLDER

| PART | 88447 |
|------|-------|
|------|-------|

- Fits into gunnel rod holder
- Adjustable angles, 0, 15 and 30 degree
- Protect your boat and rod holders from damage
- Perfect for Sword Fishing and Deep Dropping
- Portable and storable
- Anodized Aluminum



## XD FLAG POLES

- Gimbal butt makes flying in any rod holder a breeze
- Made of anodized aluminum
- Easy to store
- Fits standard 1-5/8" rod holders

| PART  | DESCRIPTION                                                                                                                                 |
|-------|---------------------------------------------------------------------------------------------------------------------------------------------|
| 88410 | <ul style="list-style-type: none"><li>• 42" ROD HOLDER FLAG POLE</li><li>• HOLDS TWO 12" SANDBAR FLAGS OR ONE 20" X 24" DIVE FLAG</li></ul> |
| 88411 | <ul style="list-style-type: none"><li>• 54" ROD HOLDER FLAG POLE</li><li>• HOLDS 36" X 60" SANDBAR FLAG OR 20" X 24" DIVE FLAG</li></ul>    |
| 88409 | <ul style="list-style-type: none"><li>• 72" ROD HOLDER FLAG POLE</li><li>• HOLDS 36" X 60" SANDBAR FLAG OR 20" X 24" DIVE FLAG</li></ul>    |



BASE

## PORTABLE CLEATS

- Constructed of anodized aluminum
- Perfect for holding a fender at the sandbar, using as an extra cleat, or using as a hose holder while washing your boat
- 36' Portable Cleat is ideal for transom cross tie
- Easily stowable, portable, and great for travel
- Fits standard 1-5/8" rod holders

| PART  | ANGLE | SIZE                   |
|-------|-------|------------------------|
| 88412 | 10°   | 15" TALL WITH 9" CLEAT |
| 88413 | 10°   | 36" TALL WITH 9" CLEAT |



## SHORE POWER CORD HOLDER

| PART | 88414 |
|------|-------|
|------|-------|

- 15° bent butt
- Perfect for holding your shore power cord or hose while cleaning boat.
- Easily stowable, portable, and great for travel
- Constructed of anodized aluminum
- Fits standard 1-5/8" rod holders





# 10 ACCESSORIES

## SEASUCKER PORTABLE RELEASE CLIP

| PART | 88449 |
|------|-------|
|------|-------|

- Utilizing Seasucker vacuum mount technology
- Secure to transom or any other flat surface
- Keep lines down out of wind and baits in the water
- Allows for a short drop back after fish strike
- Using Tigress Release Clip, part number 88656



## SEASUCKER PORTABLE CAM CLEAT

| PART | 88450 |
|------|-------|
|------|-------|

- Utilizing Seasucker vacuum mount technology
- Secure to any flat surface
- Perfect for securing outrigger halyards, both while fishing and in running position
- Also attach fenders, floats, etc
- Using Harken Cam Cleats



## SEASUCKER PITCH BAIT TUBES

| PART  | DESCRIPTION             |
|-------|-------------------------|
| 88451 | 2" BALLYHOO SIZED BAITS |
| 88452 | 4" MACKERALSIZED BAITS  |

- Utilizing Seasucker vacuum mount technology
- Secure to any flat surface
- Keep pitch baits readily available
- Easily portable and storable



## DREDGE PULL DOWN CAM CLEAT

| PART | 88453 |
|------|-------|
|------|-------|

- 1.25" Anodize Aluminum Clamp
- Harkin 327 Cam Cleat
- 316 Stainless Steel Hardware



## DEEP DROP BUCKET LEAD HOLDER

| PART | 88448 |
|------|-------|
|------|-------|

- No more banging up your boat deck or storage compartments
- Keep deep drop leads organized on and off the boat
- Store up to 14 lead weights of multiple size and weight
- Fits most standard 5 gallon buckets
- Made of high density polyethylene and SS hardware



## BILLFISH RELEASE FLAGS

- Double Grommets
- UV Resistant
- Display your daily releases

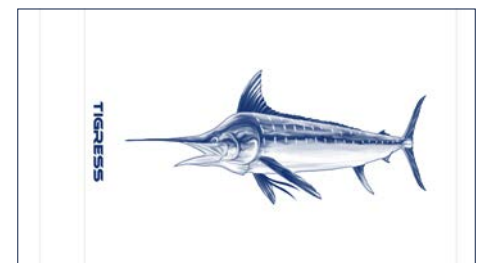
| PART  | LENGTH  | COLOR        |
|-------|---------|--------------|
| 88420 | 12"X18" | SAILFISH     |
| 88421 | 12"X18" | WHITE MARLIN |
| 88422 | 12"X18" | BLUE MARLIN  |



SAILFISH



WHITE MARLIN



BLUE MARLIN





# KITES

## SPECIALTY LITE WIND KITE

| PART | 88607-2 |
|------|---------|
|------|---------|

- Will exceed all of your expectations and fly steady in 5-10 mph winds with a simple adjustment to the bridle, eliminating the need to use different kites for different winds
- Lightweight spars are constructed of 100% carbon graphite
- Includes extra 5th spar



## HI-VELOCITY KITE

| PART | 88611-4 |
|------|---------|
|------|---------|

- Flies steady in winds of 15 mph and up
- 4 holes in the custom fabric body for passage of air through the face of the kite, allowing it to fly at higher velocity winds
- Lightweight spars are constructed of 100% carbon graphite
- Includes extra 5th spar



## ALL PURPOSE KITE

| PART | 88608-1 |
|------|---------|
|------|---------|

- Sturdy and dependable, will fly steady in 10-15 mph winds with a simple adjustment to the bridle, eliminating the need to use different kites for different winds
- Lightweight spars are constructed of 100% carbon graphite
- Includes extra 5th spar



## KITE STORAGE BAG

| PART | 88617-5 |
|------|---------|
|------|---------|

- Keeps your kites dry and in excellent condition
- Lightweight and waterproof
- Easy access to your assembled kites
- 4 Velcro straps on back to easily secure to your boat





12

## KITE ROD HOLDERS & CLUSTERS

GS

### GS FIVE ROD CLUSTER

| PART | 88157-2 |
|------|---------|
|------|---------|

- Smaller, more compact than our original Five Banger
- Designed to increase your rod storage capacity
- Constructed of cold drawn high polished anodized aluminum



GS

### TRIDENT

- Smaller, more compact than our original Triple Kite Rods
- Used for one kite rod and two additional rods to increase your rod storage capacity and keep them up and out of the way
- Constructed of cold drawn anodized aluminum
- Available in either bent butt or straight



| PART    | DESCRIPTION                        |
|---------|------------------------------------|
| 88160   | TRIDENT ROD HOLDER - BENT BUTT     |
| 88160-1 | TRIDENT ROD HOLDER - STRAIGHT BUTT |

### FIVE BANGER

- Designed to increase your rod storage capacity from 1 to 5 and keep your fishing rods in easy reach
- Constructed of cold drawn high polished anodized aluminum
- Tube ID 1-5/8" Base OD 1-1/2"



| PART    | DESCRIPTION                      |
|---------|----------------------------------|
| 88157   | FIVE ROD CLUSTER - STRAIGHT BUTT |
| 88157-1 | FIVE ROD CLUSTER - BENT BUTT     |

### TRIPLE KITE ROD

- Rod holder is used for 1 kite rod and 2 additional rods to increase your rod storage capacity and keep them up and out of the way
- Constructed of cold drawn high polished anodized aluminum
- Tube ID 1-5/8" Base OD 1-1/2"



| PART  | DESCRIPTION                                     |
|-------|-------------------------------------------------|
| 88156 | TRIPLE KITE ROD HOLDER - BENT BUTT BRUSHED      |
| 88158 | TRIPLE KITE ROD HOLDER - BENT BUTT POLISHED     |
| 88159 | TRIPLE KITE ROD HOLDER - STRAIGHT BUTT POLISHED |

GS

### OFFSET TRIPLE WITH CUP HOLDERS

- This quality rod holder can be used for rod storage and is most useful in kite fishing
- Cup holders allow for holding rigging tools as well as a drink
- Constructed of anodized aluminum and white liner to protect rods



| PART    | DESCRIPTION                                          |
|---------|------------------------------------------------------|
| 88148   | OFFSET TRIPLE WITH CUP HOLDER - PORT SIDE (AS SHOWN) |
| 88148-1 | OFFSET TRIPLE WITH CUP HOLDER - STARBOARD SIDE       |

### OFFSET TRIPLE KITE ROD

| PART | 88149-1 |
|------|---------|
|------|---------|

- Triple offset can be used port or starboard
- Additional rod storage or for kite fishing
- Constructed of anodized aluminum
- Tube ID 1-7/8" Base OD 1-1/2"



### DUAL KITE ROD

| PART | 88154 |
|------|-------|
|------|-------|

- Designed to increase your rod storage capacity, or use one side for your kite rod and the other for your fishing rod
- Constructed of cold drawn high polished anodized aluminum
- Tube ID 1-5/8" Base OD 1-1/2"







# KITE ACCESSORIES

## 100LB BRAID KITE LINE ASSEMBLY

READY RIGGED KITE LINES

| PART | 88612 |
|------|-------|
|------|-------|

- 450' of 100 lb. Hi Vis Orange 8 strand braid
- Three release clips
- Swivels on reusable spool



## 80LB BRAID KITE LINE ASSEMBLY

READY RIGGED KITE LINES

| PART | 88613 |
|------|-------|
|------|-------|

- 450' of 80 lb. Hi Vis Green 8 strand braid
- Three release clips
- Swivels on reusable spool



## 65LB KITE LINE ASSEMBLY

| PART | 88613-1 |
|------|---------|
|------|---------|

- Ready Rigged Kite Line
- 450' of 65 lb hi vis yellow 8 strand braid
- Three release clips
- Swivels on a reusable spool and mesh bag



## 50LB BRAID KITE LINE ASSEMBLY

READY RIGGED KITE LINES

| PART | 88614 |
|------|-------|
|------|-------|

- 450' of 50 lb. Hi Vis Yellow 8 strand braid
- Two release clips
- Swivels on reusable spool



## KITE ASSEMBLY BOX

EVERYTHING YOU NEED FOR A COMPLETE 2 KITE SETUP

| PART | 88619 |
|------|-------|
|------|-------|

- 1 water resistant kite box
- 20 rigging bands
- 10 beads
- 10-1/4 oz lead
- 10 split shots
- 2 rigging needles
- 3 Non-Weighted Small Kite Line Markers
- 3 Weighted Medium Kite Line Markers
- 2 each, small, medium and large hole kite clip
- 2 Tigress helium balloons
- 2 kite strings
- 10 small, 10 medium, 10 large & 10 snap swivels
- 8 kite rings



## KITE CLIPS

| PART    | DESCRIPTION                                                 |
|---------|-------------------------------------------------------------|
| 88655   | KITE KIT (2 CLIPS, 2 WIND-ON SWIVELS, & 1 COASTLOCK SWIVEL) |
| 88655-1 | KITE KIT (3 CLIPS, 3 WIND-ON SWIVELS, & 1 COASTLOCK SWIVEL) |
| 88658   | KITE RELEASE CLIP                                           |
| 88658-6 | KITE RELEASE CLIP (NO WIRE) SMALL HOLE                      |
| 88658-7 | KITE RELEASE CLIP (NO WIRE) MEDIUM HOLE                     |
| 88658-8 | KITE RELEASE CLIP (NO WIRE) LARGE HOLE                      |
| 88658-9 | KITE RELEASE CLIP                                           |



## KITE BRAID

2000 YARDS EACH

- Perfect for spooling kite or deep drop reels
- Super strong 8 strand braid
- Abrasion resistance and low water absorption

| PART  | WEIGHT | COLOR         |
|-------|--------|---------------|
| 80000 | 50LB   | HI VIS YELLOW |
| 80001 | 80LB   | HI VIS GREEN  |
| 80002 | 100LB  | HI VIS ORANGE |
| 80003 | 65LB   | HI VIS YELLOW |





KITE BALLOONS

- Two balloons & three clips
- 100% pure latex
- Biodegradable



| PART    | COLOR  |
|---------|--------|
| 88615   | YELLOW |
| 88615-1 | WHITE  |

KITE LINE MARKERS

| PART  | DESCRIPTION                          |
|-------|--------------------------------------|
| 88962 | NON-WEIGHTED SMALL KITE LINE MARKERS |
| 88963 | WEIGHTED MEDIUM KITE LINE MARKERS    |
| 88964 | WEIGHTED LARGE KITE LINE MARKERS     |



OVAL KITE LINE MARKERS

- High Density Foam
- Aluminum Inserts
- Hi Visibility
- Non Weighted

| PART    | COLOR               | QTY     |
|---------|---------------------|---------|
| 88961   | PINK, GREEN, ORANGE | 3 PACK  |
| 88961-1 | PINK                | 12 PACK |
| 88961-2 | GREEN               | 12 PACK |
| 88961-3 | ORANGE              | 12 PACK |



SS KITE RINGS

|      |       |
|------|-------|
| PART | 88663 |
|------|-------|

- High polished SS
- Less friction on your fishing line



CERAMIC KITE RINGS

8 COUNT

| PART  | SIZE  |
|-------|-------|
| 88661 | 5/16" |
| 88662 | 1/2"  |



KITE STRINGS

| PART  | DESCRIPTION       |
|-------|-------------------|
| 88617 | 3 LEG KITE STRING |
| 88618 | 4 LEG KITE STRING |



KITE RING ASSEMBLY

|      |       |
|------|-------|
| PART | 88665 |
|------|-------|







# 14 MARINE ACCESSORIES

## 316 STAINLESS STEEL GIMBALS

MAXIMUM STRENGTH AND BUILT TO WITHSTAND THE RIGORS OF OFFSHORE FISHING

| PART   | DESCRIPTION           |
|--------|-----------------------|
| 105550 | FIGHTING CHAIR GIMBAL |



105550

## ALUMINUM BACK REST RECEPTACLE

- Mount flush to deck
- Fits 2' x 1/2" radius flat bar

| PART    | DESCRIPTION                                         |
|---------|-----------------------------------------------------|
| 88555   | MILL FINISH<br>FITS 2" X 1/2" RADIUS FLAT BAR       |
| 88555-1 | WHITE POWDER COAT<br>FITS 2" X 1/2" RADIUS FLAT BAR |
| 88555-2 | POLISHED BRUSHED<br>FITS 2" X 1/2" RADIUS FLAT BAR  |



88555

88555-1

## FIBERGLASS ELECTRONICS STORAGE BOXES

- Stainless Lock
- 1/2" thick - door & frame
- 1 Gas Shock

| PART  | SIZE                  | DESCRIPTION       |
|-------|-----------------------|-------------------|
| 88651 | 24" W X 15" D X 10" H | SMALL, BLACK FACE |
| 88653 | 30" W X 17" D X 11" H | LARGE, BLACK FACE |



## PREMIUM REEL HANGERS

- Gold anodized spring loaded bracket holds reel in harness lugs
- Rod tip end rotates to lock in the rod and store it up and out of the way
- Available for most Penn and Shimano reels

| PART  | DESCRIPTION                                       |
|-------|---------------------------------------------------|
| 88725 | ADJUSTABLE REEL HANGER (ONE SIZE FITS MOST REELS) |



## PREMIUM ROD HANGERS

- To accommodate hanging your rods up and out of the way with the rod butt and tip
- Rod hangers available in anodized aluminum, silver, gold, black and polished stainless steel
- Dimensions: Closed End = 1.55" & Open End = .60"

| PART  | COLOR                        |
|-------|------------------------------|
| 88544 | SILVER ANODIZED              |
| 88545 | GOLD ANODIZED                |
| 88546 | BLACK ANODIZED               |
| 88547 | POLISHED 316 STAINLESS STEEL |





A DIVISION OF EASTERN METAL SUPPLY

**TIGRESS**  
OUTRIGGERS & GEAR

TIGRESSOUTRIGGERS.COM |   



MATESERIES.COM |   

2230 4th Avenue North | Lake Worth, FL 33461 | [tigress@easternmetal.com](mailto:tigress@easternmetal.com) | 844-740-1260