

A DIVISION OF EASTERN METAL SUPPLY

TIGRESS

OUTRIGGERS & GEAR

PRODUCT GUIDE

2026

COMBINATION ROD & CUP HOLDERS
NOW AVAILABLE!





A DIVISION OF EMS

TIGRESS

OUTRIGGERS & GEAR

OUR MISSION

SINCE OUR INCEPTION

Our mission has been to raise the bar for innovation, quality, ease of use, and convenience on the products we offer to the salt water sport fishing enthusiast.

All aluminum outriggers are constructed of cold drawn aluminum for maximum strength and durability. We then use a state of the art anodizing process to protect and color-enhance them. Every accessory is constructed of the highest quality materials to give them maximum service and life. Tigress uses only 300 series stainless or 316 Stainless Steel in every rod holder and outrigger holder.

We continue to expand our offerings of fine products and accessories making the Tigress product line of outriggers and gear the standard of quality and excellence.

TABLE OF CONTENTS

TIGRESS OUTRIGGERS 2026 PRODUCT GUIDE

MOUNTS	6
OUTRIGGERS	8
OUTRIGGING SYSTEMS	10
RIGGING KITS	12
MOUNTING ACCESSORIES	16
DREDGE BOOM	18
MATE SERIES	20

ROD HOLDERS	24
ROD HOLDER ACCESSORIES	28
PORTABLE ROD HOLDER ACCESSORIES	30
ACCESSORIES	32
KITES	34
KITE ROD HOLDER & CLUSTERS	36
KITE ACCESSORIES	38
MARINE ACCESSORIES	42

MOUNTS

XD CRANK TOP MOUNT

- For use on sport fishing boats up to 50 feet
- Adjustable upper arm with 'Run' & 'Laydown' position stops.
- User friendly folding crank handle with integrated drive brake.
- Upper-arm adjusting ball-bearing drive system, with integrated balance spring assist.
- Extreme duty top plate, upper arm and housings for outriggers up to 22ft in length.
- Stainless steel & bronze bushed head pivot for maximum trolling strength & durability.
- Unique invertible Tigress handle design for use on both soft and hard tops over 2" thick
- Accepts all Tigress XD 1-1/2" butt diameter outriggers and XD 1-1/8" butts using adapter
- Fits Tigress and other industry standard 4" x 6" mounting plates (four 5/16" diameter fasteners)
- Extreme-duty 316L stainless steel and anodized aluminum and sealed construction with UV protection
- 24 adjustable/locking system positions featuring Tigress XD 316L stainless steel design
- Ergonomic 316 stainless steel mirror-polished lever design with inverting ability for extra hand clearance on the thickest tops.
- User friendly underside lever actuation, with 8 optional indexable set-up positions
- Fits through all standard 3" diameter mounting plates and hard top holes
- Sold as pair
- 3-Year limited warranty



PART 88880

XD TOP MOUNT

- For use on sport fishing boats up to 40 feet
- Unique invertible Tigress handle design for use on both soft and hard tops over 2" thick
- Accepts all Tigress XD 1-1/2" butt diameter outriggers and XD 1-1/8" butts using adapter
- Fits Tigress and other industry standard 4" x 6" mounting plates (four 5/16" diameter fasteners)
- Extreme-duty 316 Stainless Steel and anodized aluminum and sealed construction with UV protection
- 24 adjustable/locking system positions (15° increments) featuring Tigress XD 316 Stainless Steel design 19 upper-arm angle/locking positions (10° increments) using
- 3-Year limited warranty
- Tigress XD 316 stainless steel detent design with ambidextrous horizontal stops
- Large 3-lobe UV ergonomic knob with integral detent feature when changing outrigger elevation
- Ergonomic 316 stainless steel mirror-polished lever design with inverting ability for extra hand clearance on the thickest tops.
- User friendly underside lever actuation, with 8 optional indexable set-up positions
- Standard 1/4" diameter locking stainless steel push-in-pin for outriggers
- Fits through all standard 3" diameter mounting plates and hard top holes
- Sold as pair



PART 88850

XD BAY SERIES TOP MOUNT

- For use on sport fishing boats up to 40 feet
- Accepts all Tigress XD 1-1/8" butt diameter outriggers.
- 19 upper-arm angle/locking (@10 deg.) using Tigress XD 316L Stainless Steel tooth locking design with horizontal stops for Trailering and bridges.
- Large 3-lobe UV ergonomic knob for changing and locking the outriggers' elevation
- 24 adjustable/locking system positions (15 degree increments) featuring Tigress XD 316L stainless steel locking design with HD spring return.
- User friendly side operating lever.
- Large 'XD' aluminum 14.5mm thick baseplate with four corner mounting .5/16" through x 3.000" x 5.000" 4-bolt pattern
- Fits Tigress and other industry standard 4" x 6" mounting plates (four 5/16" diameter fasteners)
- Extreme-duty 316L stainless steel and anodized aluminum and fully sealed construction with UV protection
- Ambidextrous mounting option to accommodate the side that the tri-lobe knob is positioned on.
- 3-Year limited warranty



PART 88870



@twoconchs

2 OUTRIGGERS



TELESCOPING ALUMINUM OUTRIGGERS

- For use on sport fishing boats up to 40 ft.
- Patented Tigress Track® Internal Tracking System, now with dual-tracks for increased tube strength and guiding alignment
- Larger tube diameters and wall thicknesses for increased strength and durability
- Anodized cold draw tubes inside and out for maximum protection from corrosion
- Double-locking and polished 316 Stainless Steel push-buttons on the lower tube sections for less 'hole wallowing'
- Includes a handy, heavy duty mesh storage bag
- Redesigned rings and tips
- 316 Stainless Steel polished eyelets
- UVI marine grade thermoplastic internal bushings for trouble free sliding operation
- Double 1/4" cross-holes in the butt ends in much thicker wall in anodized aluminum for the push-in-pin
- UVI thermoplastic butt sleeves to fit all 1-1/2" top and center rigger mounts
- Retracts to under 6' for trailering, bridges and storage
- 3-Year limited warranty
- Sold as pair



Patent #7,025,015 B2

PART	LENGTH	BASE OD	COLOR
88923	15'	1-1/8"	SILVER
88923-1	15'	1-1/8"	BLACK
88924	15'	1-1/2"	SILVER
88924-1	15'	1-1/2"	BLACK
88925	18'	1-1/2"	SILVER
88925-1	18'	1-1/2"	BLACK



3K CARBON FIBER TELESCOPING OUTRIGGERS

- For use on sport fishing boats up to 40 feet
- Patented Tigress Track® Internal Tracking System
- 3K carbon fiber woven finish
- Retracts to under 6' for trailering, bridges and storage
- 316 Stainless Steel polished eyelets
- Redesigned rings and tips
- Lightest telescoping outrigger in the industry
- UVI thermoplastic butt sleeves to fit all Tigress top mounts
- Includes a handy, heavy duty mesh storage bag
- 1-Year limited warranty
- Sold as pair

PART	LENGTH	BASE OD	COLOR
88679-6	15'	1-1/2"	MATTE BLACK/BLACK
88679-7	15'	1-1/2"	MATTE BLACK/SILVER
88679	18'	1-1/2"	MATTE BLACK/BLACK
88679-1	18'	1-1/2"	MATTE BLACK/SILVER
88679-3	21'	1-1/2"	MATTE BLACK/BLACK
88679-4	21'	1-1/2"	MATTE BLACK/SILVER



Patent #7,025,015 B2

TELESCOPING FIBERGLASS OUTRIGGER

- An economical alternative to aluminum outriggers for 18' to 28' boats
- 15' telescoping, three-section, heavy duty fiberglass outriggers feature heavy line guides for easy rigging
- Only mates with 1 1/8" gunnel and side mount outrigger bases
- Includes a vinyl bag for storage
- Retracts to less than 6'

PART	LENGTH	BASE OD	COLOR
88200	15'	1-1/8"	WHITE/BLUE





Jersey Boy Charters -
Captain Adrian Avena - @jerseyboycharters

3 OUTRIGGING SYSTEMS



CRANK TOP MOUNT SYSTEM

- XD Crank Top Mount
- XD Tigress Track® Telescoping Outriggers
- Pro Series Double Rigging Kit

PART	MOUNT	OUTRIGGER	RIGGING KIT
88825-2	XD CRANK MOUNT	18' SILVER XD	PRO SERIES DOUBLE
88825-3	XD CRANK MOUNT	18' BLACK XD	PRO SERIES DOUBLE
88679-02	XD CRANK MOUNT	18' CARBON FIBER B/B XD	PRO SERIES DOUBLE
88679-03	XD CRANK MOUNT	18' CARBON FIBER B/S XD	PRO SERIES DOUBLE



TOP MOUNT SYSTEM

- XD Top Mount
- XD Tigress Track® Telescoping Outriggers
- Premium Rigging Kit
- Black mesh carry bag for storage

PART	MOUNT	OUTRIGGER	RIGGING KIT
88824	XD TOP MOUNT	15' SILVER XD	ELITE
88824-1	XD TOP MOUNT	15' BLACK XD	ELITE
88825	XD TOP MOUNT	18' SILVER XD	ULTIMATE
88825-1	XD TOP MOUNT	18' BLACK XD	ULTIMATE
88679-00	XD TOP MOUNT	18' CARBON FIBER B/B XD	ULTIMATE
88679-01	XD TOP MOUNT	18' CARBON FIBER B/S XD	ULTIMATE



BAY SERIES TOP MOUNT SYSTEM

- XD Bay Series mount
- XD Tigress Track® Telescoping Center Riggers
- Deluxe Rigging Kit

PART	MOUNT	OUTRIGGER	RIGGING KIT
88823-2	XD BAY	15' 1-1/8" SILVER	DELUXE
88823-3	XD BAY	15' 1-1/8" BLACK	DELUXE



RIGGING KITS

PRO SERIES SINGLE RIGGING KIT

- Mesh bag
- 50yd spool LP 400lb blue outrigger mono
- 2 1-1/4" black stops, 2 release clips
- 2 Tigress single locking halyards
- Crimps and snap lock swivels

PART 88645-1



PRO SERIES DOUBLE RIGGING KIT

- Mesh bag
- 100yd spool LP 400lb blue outrigger mono
- 4 1-1/4" black stops
- 4 release clips
- 2 Tigress double locking halyards
- 2 SS teaser rings, crimps, snap lock swivels.

PART 88646-1



PRO SERIES TRIPLE RIGGING KIT

- Mesh bag
- 100 yd spool LP 400lb blue outrigger mono
- 6 1-1/4" black stops, 6 release clips
- 2 Tigress triple locking halyards
- 2 SS teaser rings
- Crimps and snap lock swivels

PART 88647-1



PRO SERIES CENTER RIGGING KIT

- Mesh bag
- 50yd spool LP 400lb blue outrigger mono
- 1 1-1/4" black stop
- 1 release clip 1 Tigress single locking halyard
- Crimps and snap lock swivels

PART 88610-1



PRO SERIES TIGRESS LOCKING HALYARDS

- Locks outrigger line in place with no slip or creep
- 12" bungee with SS snap lock swivel

PART	DESCRIPTION
88645	SINGLE LOCKING HALYARD
88646	DOUBLE LOCKING HALYARD
88647	TRIPLE LOCKING HALYARD



All kits feature top quality materials and are ready to be installed. Each kit includes clips, mounting hardware, cord, snubbers, glass rings or snaps and pulleys.

ECONOMY

AFFORDABLE KIT DESIGNED FOR SMALL BOAT RIGGERS UP TO 15'

- Pair of high impact release clips
- Pair of 1-1/4" cork stops
- Pair of glass ring snubbers
- Pair of eye straps with screws



PART	DESCRIPTION
88600	100' OF WHITE NYLON BRAID

DELUXE

TOP QUALITY KIT

- Pair of high impact release clips
- Pair of 1-1/4" cork stops
- Pair of glass ring snubbers
- Pair of eye straps with screws
- 4 leader snaps



PART	DESCRIPTION
88601	100' OF BLACK NYLON BRAID
88602	100' OF 400 LB. BLACK MONO & 4 CRIMPS

ELITE

TOP QUALITY KIT

- Pair of EZ release clips
- Pair of 1-3/4" cork stops
- Pair of single swivel snubbers
- Pair of eye straps with screws
- 4 leader snaps



PART	DESCRIPTION
88603	100' OF BLACK NYLON BRAID
88603-1	100' OF 400 LB. BLACK MONO & 4 CRIMPS

ULTIMATE

FOR DOUBLE RIGGING YOUR OUTRIGGERS FOR RIGGERS UP TO 22'

- 2 pairs of EZ release clips
- 2 pairs of 1-3/4" cork stops
- Pair of double swivel snubbers
- Pair of eye straps with screws
- 8 leader snaps



PART	DESCRIPTION
88605	200' OF BLACK NYLON BRAID
88605-1	200' OF 400 LB. BLACK MONO & 12 CRIMPS

CENTER RIGGER KIT

- High impact release clip
- 1-1/4" cork stop
- Glass ring snubber
- Eye strap with screws
- 2 leader snaps
- 30' of black nylon braid



PART	88610
------	-------

SNUBBERS

TYPE	PART	DESCRIPTION
A	88620	12" ECONOMY SNUBBER
B	88624	16" DELUXE SNUBBER
D	88628	16" DELUXE PRO SNUBBER
E	88632	16" ELITE SNUBBER
G	88635	6" ELITE SNUBBER W/BALL BEARING COASTLOCK SNAP
G	88635-1	12" ELITE SNUBBER W/BALL BEARING COASTLOCK SNAP
G	88635-2	18" ELITE SNUBBER W/BALL BEARING COASTLOCK SNAP
H	88636	12" ELITE SNUBBER W/SS SNAP



ACCESSORIES

TYPE	PART	DESCRIPTION
A	88630	SINGLE STAINLESS SWIVEL
B	88640	DOUBLE STAINLESS SWIVEL
C	88650	PAIR OF GLASS OUTRIGGER RINGS
D	88652	PAIR OF 1-1/4" CORK STOPS
E	88654	PAIR OF 1-3/4" CORK STOPS
F	88656	PAIR OF OUTRIGGER RELEASE CLIPS
G	88657	DOWN RIGGER RELEASE CLIP
H	88659	FLAT LINE RELEASE CLIP
I	88660	PAIR OF STAINLESS STEEL RINGS
J	88666	PAIR OF NICKEL PLATED SNAPS
K	88667	PAIR OF STAINLESS PAD EYES W/STAINLESS SCREWS
L	88668	ANTENNA FLAG CLIP
M	88669	HALYARD FLAG CLIP
N	88670	100' OF 400 LB. TEST BLACK MONO (DIA. 2.2 MM)
O	88671	100' OF 300 LB. BLACK NYLON BRAID
P	88690	PAIR OF 1-1/4" BLACK PLASTIC STOPS
Q	88695	EZ OUTRIGGER RELEASE CLIPS (BLACK)





Chip Sheehan - @chipsahoycharters

MOUNTING ACCESSORIES

OUTRIGGER HOLDERS AND REPLACEMENT TUBES

GUNNEL MOUNT	SIZE	MATERIAL
88506	1-1/2" ID	CAST 316

SIDE MOUNT	SIZE	MATERIAL
88504	1-1/8" ID	FABRICATED 304
88505	1-1/8" ID	CAST 316
88508	1-1/2" ID	CAST 316

SIDE MOUNT	SIZE	MATERIAL
88501	1-1/8" ID	CAST BASE
88503	1-1/8" ID	CUT BASE
88507	1-1/2" ID	CAST BASE



T-TOP ALUMINUM WELD-ON EXTRUSIONS

- All backing & mounting plates are pre-drilled for installation
- All mounting holes are 3"

PART	LENGTH	WIDTH	HEIGHT
88932	5	6.5"	0.25"
OOMP-20	20"	5.516"	1.25"
OOMP-30	30"	5.516"	1.25"



OUTRIGGER HOLDER REDUCERS

DOWNSIZE YOUR OUTRIGGER HOLDERS.

PART	OD	ID
88680	REDUCE FROM 1-1/2"	1-1/8"
88680-1	REDUCE FROM 1-7/8"	1-1/2"



OUTRIGGER LINE HOLDER

- Fits 1-1/8" Outrigger Poles
- Keeps outrigger lines organized while poles are collapsed
- Easy clamp on installation
- Sold as 2 Pairs

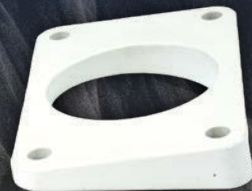
PART	88691
------	-------



TOP MOUNT WEDGES

Angular adjusting wedges to straighten the top mount in installation allow for less stress on the top and smoother deployment of your outriggers.

PART	DEGREE
88934	7°
88936	9°
88938	11°





Johnston McCurry - @4sonscharters

DREDGE BOOM



POSEIDON DREDGE BOOM

- Allows smaller center consoles to fish like bigger boats
- Outpulls any other dredge on the market
- 7' black fiberglass boom
- 3/0 Folbe heavy-duty block pulley
- Ideal for LP or Hooker electric reels
- 316 stainless steel hardware
- Comes with 14' nylon safety tether with 316 stainless steel carabiner



PART	LENGTH	COLOR
88443	7'	BLACK/SILVER



POSEIDON DREDGE RIGGING KIT

- 50 yards of 400lb Momoi Outrigger Mono
- 500 lb stainless dredge dog swivel
- 29 mm Harken Carbo Air Block
- 2" spring gate snap
- Sleeve crimps



PART	
88443-1	

DREDGE BOOM SAFETY TETHER

- 14' nylon safety tether with 316 stainless steel carabiner
- For use with XD Poseidon Dredge Boom or big game trolling rods



PART	
88446	

LITE & HEAVY SAFETY TETHER

- Keep valuable fishing equipment tethered to boat
- UV Resistant Black Vinyl Coating
- SS Snaps

PART	DESCRIPTION
88440	<ul style="list-style-type: none"> • LITE SAFETY TETHER • 630LB BREAKING STRENGTH
88440-1	<ul style="list-style-type: none"> • HEAVY SAFETY TETHER • HEAVY 1260LB BREAKING STRENGTH





THE PERFECT SOLUTION



COMBINATION ROD & CUP HOLDERS

DRINK & FISH
AT THE SAME TIME!

Appearances can be deceiving – at first glance, Mate Series seems like your standard premium stainless cup holder, but take a closer look, and you’ll discover its secret identity – a hidden rod holder built seamlessly into the cup, redefining convenience on the water.



mateseries.com

STAINLESS

316 STAINLESS

ROUND



DRAIN, ROUND
TOP ROD & CUP
HOLDER

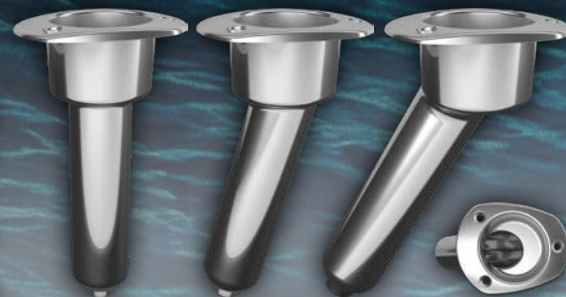
0°	C1000D
15°	C1015D
30°	C1030D



OPEN, ROUND
TOP ROD & CUP
HOLDER

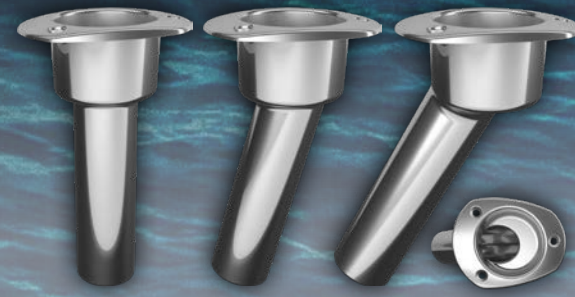
0°	C1000ND
15°	C1015ND
30°	C1030ND

OVAL



DRAIN, OVAL
TOP ROD & CUP
HOLDER

0°	C2000D
15°	C2015D
30°	C2030D



OPEN, OVAL
TOP ROD & CUP
HOLDER

0°	C2000ND
15°	C2015ND
30°	C2030ND

SCREWLESS



DRAIN, ROUND
TOP ELITE
SCREWLESS

0°	C1000DS
15°	C1015DS
30°	C1030DS



DRAIN, OVAL
TOP ELITE
SCREWLESS

0°	C2000DS
15°	C2015DS
30°	C2030DS

ABS PLASTIC



Drain, Round Top (BLK)

0°	P1000DB
15°	P1015DB
30°	P1030DB



Open, Oval Top (BLK)

30°	P2030ND
-----	---------



Drain, Round Top (WHT)

0°	P1000DW
15°	P1015DW
30°	P1030DW



Drain, Oval Top (WHT)

30°	P2030W
-----	--------



Closed, Oval Top Kit for Kayaks

30°	P2030BK
-----	---------



Kayak Seal Kit
For ABS Rod & Cupholders

PART	KG2000B
------	---------

FLAG POLES



Flag Pole

36" Pole Only
72" Pole Only

36"	FP36
72"	FP72



USA Flag Pole

36" with 12" x 18" American Flag
72" with 3" x 5" American Flag

36"	FP36USA
72"	FP72USA



Dive Flag Pole

36" with 20" x 24" Dive Flag
72" with 20" x 24" Dive Flag

36"	FP36DIVE
72"	FP72DIVE

ACCESSORIES



Backing Plate

316 Stainless
For use with ALL Mate Series

PART	CBP
------	-----



Threaded Backing Plate - SST
For existing Ø 3¾ hole
For SST Round Tops. Not for use with Elite Models

PART	C1334314
------	----------



Backing Plate - SST

316 Stainless
For all Mate Series except Elite

PART	CBPT
------	------



Threaded Backing Plate - ABS Plastic
For Ø 3¾ hole
For ROUND top ABS Models

PART	P1334314
------	----------



316 Stainless Cap

Fits all round plastic rod holder cupholders

PART	1000CS
------	--------



316 Stainless Oval Cap

Fits all oval plastic rod holders

PART	2000CS
------	--------



Cast SST Cup Holder

For Ø 3½ hole
Ø½ Drain Barb

PART	C1000CH
------	---------



Drain Cap

Fits 2" OD

PART	DR1B
------	------



Tee Adapter

(3) - ½" Barbs

PART	T12
------	-----



Straight Adapter

3/8" NPT, ¾" Barb

PART	A3812
------	-------



Elbow Adapter

3/8" NPT, ¾" Barb

PART	EL3812
------	--------

ROD HOLDERS

9" ROD HOLDER

- 316 Stainless Steel
- 2 1/8" Cut Out
- Requires the 77274 Rod Holder Fastener
- Uses the 77275-1 Backing Plate

PART	ANGLE
77275	30° HEAD
77276	15° HEAD
77277	0° HEAD



CLOSED BASE

10 1/2" SWIVEL ROD HOLDER

- 316 Stainless Steel
- 2 1/8" Cut Out
- Requires the 77274-1 Rod Holder Fastener
- Uses the 77278-1 Backing Plate

PART	ANGLE
77278	0° HEAD
77279	15° HEAD



SWIVEL BASE

OVAL HEAD GUNNEL ROD HOLDERS

MEDIUM OVAL GUNNEL ROD HOLDERS

PART	LENGTH	ANGLE	ID
88525	9"	30° HEAD	1-5/8"
88527	9"	0° HEAD	1-5/8"
88529	9"	15° HEAD	1-5/8"
BACKING PLATE: 88525-1			

3.28" x 4.06"
HEAD SIZE



OVAL HEAD

CAST BAR

SWIVEL ROD HOLDERS

LARGE OVAL GUNNEL ROD HOLDERS

PART	LENGTH	ANGLE	ID
88522	10-1/2"	0° HEAD	1-7/8"
88524	10-1/2"	15° HEAD	1-7/8"
BACKING PLATE: 88530-3			

3.85" x 4.88"
3 HOLE OVAL HEAD
4.25" x 4.75"
LONG SWIVEL
RECTANGULAR HEAD



RECTANGULAR HEAD

OVAL HEAD

SWIVEL BASE

ROUND HEAD CLOSED BASE

HEAVY DUTY WITH DRAIN HOLE TO ACCEPT 1/4" NPT PIPE TO HOSE FITTING

PART	LENGTH	ANGLE	ID
77900	9"	30° HEAD	1-5/8"
77901	9"	15° HEAD	1-5/8"
77902	9"	0° HEAD	1-5/8"
BACKING PLATE: 77900-2 OR 88525-1			

3.85"
HEAD SIZE



ROUND HEAD

CLOSED BASE

OVAL HEAD CLOSED BASE

- Heavy duty oval head closed end base, with drain hole to accept 1/4" NPT pipe to hose fitting.

PART	LENGTH	ANGLE	ID
88535	9"	30° HEAD	1-5/8"
88537	9"	0° HEAD	1-5/8"
88539	9"	15° HEAD	1-5/8"
BACKING PLATE: 88525-1			

3.28"
HEAD SIZE



OVAL HEAD

CLOSED BASE

PATENT # 8,291,636

ECONOMY ROD HOLDERS

PART	ANGLE	SIZE	DESCRIPTION
77270	0°	9" X 1-5/8" ID	ECONOMY ROD HOLDER 0°
77271	15°	9" X 1-5/8" ID	ECONOMY ROD HOLDER 15°
77273	30°	9" X 1-5/8" ID	ECONOMY ROD HOLDER 30°



ROD HOLDER DRAINAGE CAP

- Covers rod holder base, allowing drainage tubes to be connected
- Mates with 77270, 77271, 77273
- Locks in place with twist



PART 77271-01

316 STAINLESS STEEL FLARED ROD HOLDER

- 10" weld on
- 316 Stainless Steel tapered without blade
- Heavy duty
- Rod holder ID 1-5/8"
- With vinyl liner



PART 88155



ROD RIGGER

- Allows for your rods to give you a better fishing spread.

PART 77173

316 STAINLESS STEEL ADJUSTABLE CLAMP-ON

- Choose the angle you need while providing the versatility of mounting either horizontally or vertically
- Clamp-on rod holders are sized IPS pipe
- Includes a heavy white vinyl liner

PART	SIZE	ID
88191	1"	1-5/8"
88192	1-1/4"	1-5/8"
88193	1-1/2"	1-5/8"



CLAMP-ON ROD HOLDER

3/4" - 1" ADJUSTABLE

- Improved version of the old standard rail mount rod holder
- 316 Stainless Steel clamp mechanism with high polished stainless tube
- White vinyl liner for rod protection
- Fits 3/4" and 1" rails
- 9" x 2" OD base
- Rod holder ID 1-5/8"



PART 88176

SIDE MOUNT

316 STAINLESS STEEL 9" SIDE MOUNT

- Designed for applications where clamp-on or flush mount holders are not practical
- Can be mounted on any vertical flat surface
- White vinyl insert included to protect your rod



PART 88540

SWIVEL SIDE MOUNT

316 STAINLESS STEEL 9" SWIVEL SIDE MOUNT

- Designed for applications where clamp-on or flush mount holders are not practical
- Can be mounted on any vertical flat surface
- White vinyl insert included to protect your rod



PART 88542

WELD ON ROD HOLDERS

LINERS SEPARATE

PART	DESCRIPTION
66412	10" WELD ON ALUMINUM FLARED ROD HOLDER W/OUT BLADE
66242	10" WELD ON ALUMINUM FLARED ROD HOLDER W/BLADE
66122	10" WELD ON ALUMINUM ROD HOLDER W/LONG WEDGE
66262	10" WELD ON ALUMINUM ROD HOLDER W/STRAIGHT BLADE
88147	8.5" WELD ON ALUMINUM SPINNING ROD HOLDER



STRAIGHT SIDE MOUNT

8-1/2" STRAIGHT SIDE MOUNT TRANSOM ROD OR CONSOLE ROD HOLDER

- 4 hole 3" x 4-1/2" brushed pad
- Includes liner



PART 66400

CONSOLE DOUBLE SPINNING ROD HOLDER

- Polished aluminum
- Internal threaded 1/4-20
- Includes liner



PART 88144-2

BOLT-ON TRANSOM MOUNT ROD HOLDER

- Polished aluminum
- 4 hole 3" x 4-1/2" brushed pad
- 10" flared rod holder
- Includes liner



PART 88146

TRANSOM MOUNT ROD HOLDERS

- Constructed of cold drawn anodized aluminum
- Includes white liners to protect your rod
- Available with either 4 or 5 rod holders

PART	LENGTH	DESCRIPTION
88144	35"	FIVE ROD HOLDER
88144-1	28"	FOUR ROD HOLDER



8 ROD HOLDER ACCESSORIES

PIPE TO HOSE FITTINGS

PART	DESCRIPTION
77910	316 STAINLESS STEEL 1/4" IPS
77911	NYLON 1/4" IPS



BACKING PLATES

PART	DESCRIPTION
77900-2	ROUND HEAD BACKING PLATE
88525-1	MEDIUM BACKING PLATE
88530-3	UNIVERSAL BACKING PLATE



77900-2



88525-1



88530-3

BACKING PLATES

- For screwless rod holders

PART	SIZE
77275-1	9"
77278-1	10 1/2"



77275-1



77278-1

ROD HOLDER FASTENERS

- For screwless rod holders
- Requires 1/2" ratchet

PART	SIZE
77274	9"
77274-1	10 1/2"



77274



77274-1

LARGE ROD HOLDER EXTENDERS

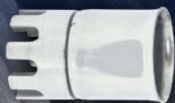
- Stainless and nylon rod holder extenders to shorten your rod holder to fit your bent butt fishing rod
- We also offer our stainless steel swivel adapter to convert your standard rod holder to a swivel rod holder
- Fits most medium and large rod holders and are 1.51" wide
- Available in 2", 4" & 6"



PART	LENGTH	MATERIAL
88686	6"	STAINLESS STEEL
88686-1	4"	STAINLESS STEEL
88686-2	2"	STAINLESS STEEL
88688	6"	NYLON
88688-1	4"	NYLON

SWIVEL ADAPTER

2-1/2" L x 1-1/2" W - STAINLESS STEEL
SWIVEL ROD HOLDER ADAPTER



2-1/2" L x 1-1/2" W

PART	88687
------	-------

TIGERFISH BAT

18" ALL ALUMINUM CONSTRUCTION
WITH SOFT EVA FOAM GRIP



PART	88682
------	-------

T-TOP ROD SAFETY STRAPS

PART	88676	PAIR
------	-------	------



10' SAFETY STRAP

PART	88675	PAIR
------	-------	------



VINYL LINERS

FOR ALUMINUM WELD-ON ROD HOLDERS

PART	DESCRIPTION	COLOR
88152-3	FOR 8-1/2" FLARED ROD HOLDERS	WHITE
88152-4	FOR 8-1/2" FLARED ROD HOLDERS	BLACK
88152-5	FOR 10" FLARED ROD HOLDERS	WHITE
88152-6	FOR 10" FLARED ROD HOLDERS	BLACK
LINERSRH3	FOR SRH-3 UV PROTECTED PVC	WHITE
LINERSRH4	FOR SRH-3 UV PROTECTED PVC	BLACK
88152-8	10" FLARED RING TOP LINER	WHITE
88152-9	10" FLARED RING TOP LINER	BLACK



88152-3



88152-4



88152-5



88152-6



LINERSRH3



LINERSRH4



88152-8



88152-9

VINYL LINERS

FOR GUNNEL ROD HOLDERS

PART	ANGLE	COLOR	LENGTH
77900-3	30°	BLACK	9"
77901-3	0°	BLACK	9"
77902-3	15°	BLACK	9"
77900-4	30°	WHITE	9"
77901-4	0°	WHITE	9"
77902-4	15°	WHITE	9"
88530-00	0°	BLACK	10-1/2"
88530-15	15°	BLACK	10-1/2"
88530-30	30°	BLACK	10-1/2"
88530-2	0°	WHITE	12-1/2"



77901-3



77902-3



77900-3



77901-4



77902-4



77900-4

ALL 10-1/2" VINYL INSERTS ARE FOR 88520
AND 88530 SERIES ROD HOLDERS

CUP HOLDERS



LARGE STAINLESS STEEL CUP INSERT
Fits 30 oz and 20 oz Tumblers.
MATES WITH 88586-1

PART	HOSE SIZE	HOLE SIZE
88586	3/8"	4-1/8"

LARGE CUP HOLDER MOUNTING RING

PART	88586-1
------	---------



BLACK PLASTIC CUP INSERT

PART	PCHE-BP
------	---------

w/Stainless Steel rim.
MATES WITH PCHE



STAINLESS STEEL CUP INSERT

PART	88585
------	-------

MATES WITH PCHE

CUP HOLDER MOUNTING RING

PART	PCHE
------	------





PORTABLE ROD HOLDER ACCESSORIES



COME ABOARD HANDLE

PART 88416

- Perfect for safely boarding and unboarding your boat
- Made out of anodized 6061 aluminum
- Finger molded aluminum handles for comfort grip
- Fits into standard 1 5/8" rod holder
- Gimbal butt for locking in rod holder
- Dimensions: 55" L x 8" W



PORTABLE CUP HOLDER

PART 88415

- Easily adjusts for 15 and 30 degree rod holders
- Keeps your drinks readily available
- Add extra drink holders in an instant



ADJUSTABLE DEEP DROP LEAD HOLDER

PART 88447

- Fits into gunnel rod holder
- Adjustable angles, 0, 15 and 30 degree
- Protect your boat and rod holders from damage
- Perfect for Sword Fishing and Deep Dropping
- Portable and storable
- Anodized Aluminum



FLAG POLES

- Gimbal butt makes flying in any rod holder a breeze
- Made of anodized aluminum
- Easy to store
- Fits standard 1-5/8" rod holders

PART **DESCRIPTION**

- | | |
|-------|--|
| 88410 | <ul style="list-style-type: none"> • 42" ROD HOLDER FLAG POLE • HOLDS TWO 12" SANDBAR FLAGS OR ONE 20" X 24" DIVE FLAG |
| 88411 | <ul style="list-style-type: none"> • 54" ROD HOLDER FLAG POLE • HOLDS 36" X 60" SANDBAR FLAG OR 20" X 24" DIVE FLAG |
| 88409 | <ul style="list-style-type: none"> • 72" ROD HOLDER FLAG POLE • HOLDS 36" X 60" SANDBAR FLAG OR 20" X 24" DIVE FLAG |



BASE



PORTABLE CLEATS

- Constructed of anodized aluminum
- Perfect for holding a fender at the sandbar, using as an extra cleat, or using as a hose holder while washing your boat
- 36' Portable Cleat is ideal for transom cross tie
- Easily stowable, portable, and great for travel
- Fits standard 1-5/8" rod holders

PART	ANGLE	SIZE
88412	10°	15" TALL WITH 9" CLEAT
88413	10°	36" TALL WITH 9" CLEAT



SHORE POWER CORD HOLDER

PART 88414

- 15° bent butt
- Perfect for holding your shore power cord or hose while cleaning boat.
- Easily stowable, portable, and great for travel
- Constructed of anodized aluminum
- Fits standard 1-5/8" rod holders





10 ACCESSORIES

SEASUCKER PORTABLE RELEASE CLIP

PART 88449

- Utilizing Seasucker vacuum mount technology
- Secure to transom or any other flat surface
- Keep lines down out of wind and baits in the water
- Allows for a short drop back after fish strike
- Using Tigress Release Clip, part number 88656



SEASUCKER PORTABLE CAM CLEAT

PART 88450

- Utilizing Seasucker vacuum mount technology
- Secure to any flat surface
- Perfect for securing outrigger halyards, both while fishing and in running position
- Also attach fenders, floats, etc
- Using Harken Cam Cleats



SEASUCKER PITCH BAIT TUBES

PART	DESCRIPTION
88451	2" BALLYHOO SIZED BAITS
88452	4" MACKERAL SIZED BAITS

- Utilizing Seasucker vacuum mount technology
- Secure to any flat surface
- Keep pitch baits readily available
- Easily portable and storable



DEEP DROP BUCKET LEAD HOLDER

PART 88448

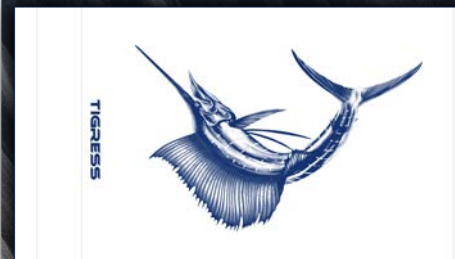
- No more banging up your boat deck or storage compartments
- Keep deep drop leads organized on and off the boat
- Store up to 14 lead weights of multiple size and weight
- Fits most standard 5 gallon buckets
- Made of high density polyethylene and SS hardware



BILLFISH RELEASE FLAGS

- Double Grommets
- UV Resistant
- Display your daily releases

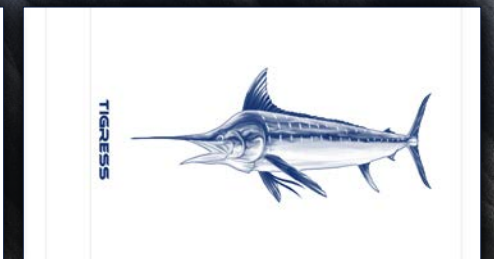
PART	LENGTH	COLOR
88420	12"X18"	SAILFISH
88421	12"X18"	WHITE MARLIN
88422	12"X18"	BLUE MARLIN



SAILFISH



WHITE MARLIN



BLUE MARLIN

11 KITES

SPECIALTY LITE WIND KITE

PART 88607-2

- Will exceed all of your expectations and fly steady in 5-10 mph winds with a simple adjustment to the bridle, eliminating the need to use different kites for different winds
- Lightweight spars are constructed of 100% carbon graphite
- Includes extra 5th spar



ALL PURPOSE KITE

PART 88608-1

- Sturdy and dependable, will fly steady in 10-15 mph winds with a simple adjustment to the bridle, eliminating the need to use different kites for different winds
- Lightweight spars are constructed of 100% carbon graphite
- Includes extra 5th spar



HI-VELOCITY KITE

PART 88611-4

- Flies steady in winds of 15 mph and up
- 4 holes in the custom fabric body for passage of air through the face of the kite, allowing it to fly at higher velocity winds
- Lightweight spars are constructed of 100% carbon graphite
- Includes extra 5th spar



KITE STORAGE BAG

PART 88617-5

- Keeps your kites dry and in excellent condition
- Lightweight and waterproof
- Easy access to your assembled kites
- 4 Velcro straps on back to easily secure to your boat



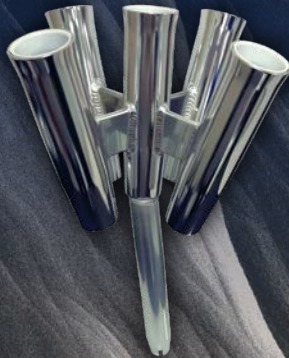
12 KITE ROD HOLDERS & CLUSTERS



GS FIVE ROD CLUSTER

PART 88157-2

- Smaller, more compact than our original Five Banger
- Designed to increase your rod storage capacity
- Constructed of cold drawn high polished anodized aluminum



TRIDENT

- Smaller, more compact than our original Triple Kite Rods
- Used for one kite rod and two additional rods to increase your rod storage capacity and keep them up and out of the way
- Constructed of cold drawn anodized aluminum
- Available in either bent butt or straight



PART	DESCRIPTION
88160	TRIDENT ROD HOLDER - BENT BUTT
88160-1	TRIDENT ROD HOLDER - STRAIGHT BUTT



OFFSET TRIPLE WITH CUP HOLDERS

- This quality rod holder can be used for rod storage and is most useful in kite fishing
- Cup holders allow for holding rigging tools as well as a drink
- Constructed of anodized aluminum and white liner to protect rods



PART	DESCRIPTION
88148	OFFSET TRIPLE WITH CUP HOLDER - PORT SIDE (AS SHOWN)
88148-1	OFFSET TRIPLE WITH CUP HOLDER - STARBOARD SIDE

FIVE BANGER

- Designed to increase your rod storage capacity from 1 to 5 and keep your fishing rods in easy reach
- Constructed of cold drawn high polished anodized aluminum
- Tube ID 1-5/8" Base OD 1-1/2"



PART	DESCRIPTION
88157	FIVE ROD CLUSTER - STRAIGHT BUTT
88157-1	FIVE ROD CLUSTER - BENT BUTT

TRIPLE KITE ROD

- Rod holder is used for 1 kite rod and 2 additional rods to increase your rod storage capacity and keep them up and out of the way
- Constructed of cold drawn high polished anodized aluminum
- Tube ID 1-5/8" Base OD 1-1/2"



PART	DESCRIPTION
88156	TRIPLE KITE ROD HOLDER - BENT BUTT BRUSHED
88158	TRIPLE KITE ROD HOLDER - BENT BUTT POLISHED
88159	TRIPLE KITE ROD HOLDER - STRAIGHT BUTT POLISHED

OFFSET TRIPLE KITE ROD

PART 88149-1

- Triple offset can be used port or starboard
- Additional rod storage or for kite fishing
- Constructed of anodized aluminum
- Tube ID 1-7/8" Base OD 1-1/2"



DUAL KITE ROD

PART 88154

- Designed to increase your rod storage capacity, or use one side for your kite rod and the other for your fishing rod
- Constructed of cold drawn high polished anodized aluminum
- Tube ID 1-5/8" Base OD 1-1/2"





KITE ACCESSORIES



100LB BRAID KITE LINE ASSEMBLY

READY RIGGED KITE LINES

PART 88612

- 450' of 100 lb. Hi Vis Orange 8 strand braid
- Three release clips
- Swivels on reusable spool



80LB BRAID KITE LINE ASSEMBLY

READY RIGGED KITE LINES

PART 88613

- 450' of 80 lb. Hi Vis Green 8 strand braid
- Three release clips
- Swivels on reusable spool



65LB KITE LINE ASSEMBLY

PART 88613-1

- Ready Rigged Kite Line
- 450' of 65 lb hi vis yellow 8 strand braid
- Three release clips
- Swivels on a reusable spool and mesh bag



50LB BRAID KITE LINE ASSEMBLY

READY RIGGED KITE LINES

PART 88614

- 450' of 50 lb. Hi Vis Yellow 8 strand braid
- Two release clips
- Swivels on reusable spool



KITE CLIPS

PART	DESCRIPTION
88655	KITE KIT (2 CLIPS, 2 WIND-ON SWIVELS, & 1 COASTLOCK SWIVEL)
88655-1	KITE KIT (3 CLIPS, 3 WIND-ON SWIVELS, & 1 COASTLOCK SWIVEL)
88658	KITE RELEASE CLIP
88658-6	KITE RELEASE CLIP (NO WIRE) SMALL HOLE
88658-7	KITE RELEASE CLIP (NO WIRE) MEDIUM HOLE
88658-8	KITE RELEASE CLIP (NO WIRE) LARGE HOLE
88658-9	KITE RELEASE CLIP

88655-1



88655



88658



88658-6



88658-7



88658-8



88658-9



KITE ASSEMBLY BOX

EVERYTHING YOU NEED FOR A COMPLETE 2 KITE SETUP

PART 88619

- 1 water resistant kite box
- 20 rigging bands
- 10 beads
- 10-1/4 oz lead
- 10 split shots
- 2 rigging needles
- 3 Non-Weighted Small Kite Line Markers
- 3 Weighted Medium Kite Line Markers
- 2 each, small, medium and large hole kite clip
- 2 Tigress helium balloons
- 2 kite strings
- 10 small, 10 medium, 10 large & 10 snap swivels
- 8 kite rings



NEEDLE BAND HOLDER

- Used to hold needle and rubber bands for bridling baits while kite fishing or trolling
- Dual suckers keep device secure on flat surfaces
- 4 magnets to securely hold rigging needle while not in use
- Multiple ridged tube allows anglers to remove band easily with a needle or hook
- Low profile allows device to be close to reels without interfering with anglers fishing

PART 88455



KITE BALLOONS

- Two balloons & three clips
- 100% pure latex
- Biodegradable

PART	COLOR
88615	YELLOW
88615-1	WHITE



KITE LINE MARKERS

PART	DESCRIPTION
88962	NON-WEIGHTED SMALL KITE LINE MARKERS
88963	WEIGHTED MEDIUM KITE LINE MARKERS



OVAL KITE LINE MARKERS

- High Density Foam
- Hi Visibility
- Aluminum Inserts
- Non Weighted

PART	COLOR	QTY
88961	PINK, GREEN, ORANGE	3 PACK
88961-1	PINK	12 PACK
88961-2	GREEN	12 PACK
88961-3	ORANGE	12 PACK



SS KITE RINGS

PART	88663
------	-------

- High polished SS
- Less friction on your fishing line



CERAMIC KITE RINGS

8 COUNT

PART	SIZE
88661	5/16"
88662	1/2"



KITE STRINGS

PART	DESCRIPTION
88617	3 LEG KITE STRING
88618	4 LEG KITE STRING



KITE RING ASSEMBLY

PART	88665
------	-------





MARINE ACCESSORIES

Chip Sheehan - @chipsahoycharters

316 STAINLESS STEEL GIMBALS

MAXIMUM STRENGTH AND BUILT TO WITHSTAND THE RIGORS OF OFFSHORE FISHING



PART	DESCRIPTION
105550	FIGHTING CHAIR GIMBAL

ALUMINUM BACK REST RECEPTACLE

- Mount flush to deck
- Fits 2" x 1/2" radius flat bar

PART	DESCRIPTION
88555	MILL FINISH FITS 2" X 1/2" RADIUS FLAT BAR
88555-1	WHITE POWDER COAT FITS 2" X 1/2" RADIUS FLAT BAR
88555-2	POLISHED BRUSHED FITS 2" X 1/2" RADIUS FLAT BAR



FIBERGLASS ELECTRONICS STORAGE BOXES

- Stainless Lock
- 1/2" thick - door & frame
- 1 Gas Shock

PART	SIZE	DESCRIPTION
88651	24" W X 15" D X 10" H	SMALL, BLACK FACE
88653	30" W X 17" D X 11" H	LARGE, BLACK FACE



PREMIUM REEL HANGERS

- Gold anodized spring loaded bracket holds reel in harness lugs
- Rod tip end rotates to lock in the rod and store it up and out of the way
- Available for most Penn and Shimano reels

PART	DESCRIPTION
88725	ADJUSTABLE REEL HANGER (ONE SIZE FITS MOST REELS)



PREMIUM ROD HANGERS

- To accommodate hanging your rods up and out of the way with the rod butt and tip
- Rod hangers available in anodized aluminum, silver, gold, black and polished stainless steel
- Dimensions: Closed End = 1.55" & Open End = .60"

PART	COLOR
88544	SILVER ANODIZED
88545	GOLD ANODIZED
88546	BLACK ANODIZED
88547	POLISHED 316 STAINLESS STEEL



A DIVISION OF EASTERN METAL SUPPLY

TIGRESS

OUTRIGGERS & GEAR

TIGRESSOUTRIGGERS.COM |   

MATESERIES.COM |   